



Series 8630-Direct Set Window Installation Instructions

westernwindowssystems.com



Scan to Play
Video

This guide provides step-by-step instructions for installing the Series 8630-Direct Set Window. Sealants used should be compatible with the building envelope's water-proofing membrane. Drip caps should be ordered when the window is ordered.



CAUTION

We recommend all Western Window Systems products be installed by experienced professionals.

Contact Us

2200 E. Riverview Dr., Phoenix, AZ 85034

877-398-9643

www.westernwindowssystems.com

Important Safety Information



WARNINGS

If warning is not heeded, may cause death or serious injury



CAUTIONS

If precaution isn't taken, may cause minor or moderate injury

NOTE

Additional information that pertains to the installation

Read instructions, front to back, before beginning installation.

Product Storage and Transports

Product should be stored in a dry location protected from the elements. Wet packaging can cause damage to product finishes. If the packaging becomes wet, immediately replace it with dry packaging.

Product should be stored and transported upside down. To avoid damage, do not drop or drag product from the delivery truck.

Removal of Old Fenestration Products

Ensure that old fenestration products are removed and properly disposed. You may be able to recycle or donate removed glass and frames. For more information, check with your local recycling agency, the American Architectural Manufacturers Association, the U.S. Environmental Protection Agency, or the Building Materials Reuse Association to locate a nearby company or organization that accepts used windows and doors. To donate removed products, contact local nonprofits in need of building supplies, such as Habitat for Humanity.

NOTE: Homes and condominiums built before 1978 may have lead-based paint, which can pose serious health hazards during removal. Information and instruction regarding proper management of lead-based paint is available at www.epa.gov/lead.installation.

Components

The components supplied will vary depending on the configuration you are installing. Before proceeding with the installation, inspect the components to become familiar with them.

Confirm there is no damage that will affect the appearance or performance of the installed product. Damaged or missing parts should be reported to your supplier **within 48 hours** of delivery.

NOTE: Windows will be shipped knocked down and glass will need to be field glazed.

Installation Preparation

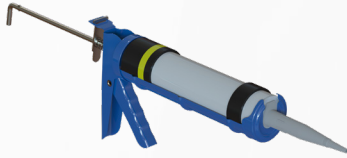
Prior to installation, it is important that you carefully review and understand the installation instructions and any drawings supplied. Western Window Systems' fenestration products should be installed only by experienced and qualified installation professionals. Failure to follow these instructions may result in poor performance, including but not limited to, operation, security, and weatherproofing failures, and may void Western Window Systems expressed limited warranties.

This is a finished product that must be protected before, during, and after installation to prevent damage.



NOTE: The rough opening must be waterproofed in accordance with AAMA Installation Masters standards, as well as flashing and sealant manufacturer instructions, and must meet local building codes.

Tools for Installation



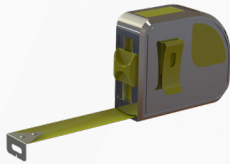
Caulking Gun



Hand Level



Power Drill



Tape Measure

Fasteners and Hardware



**#8 x 1 1/4" Pan Head Screw
for nailfin installs**

**#10 x 2 1/2" Flat Head Screw
for equal leg install**

NOTE:

Tools and Hardware are not included.

Either Wedge Shims or Horseshow Shims may be used.

Install Options

Verify the window is the correct size and the rough opening is sized correctly to for the unit(s) to be installed. If you are mulling two or more windows, refer to the mulling instructions found at the end of this instruction manual.

There are two install options for the Direct Set Window, as seen below. Verify you are using the correct instructions based on your configuration of window.



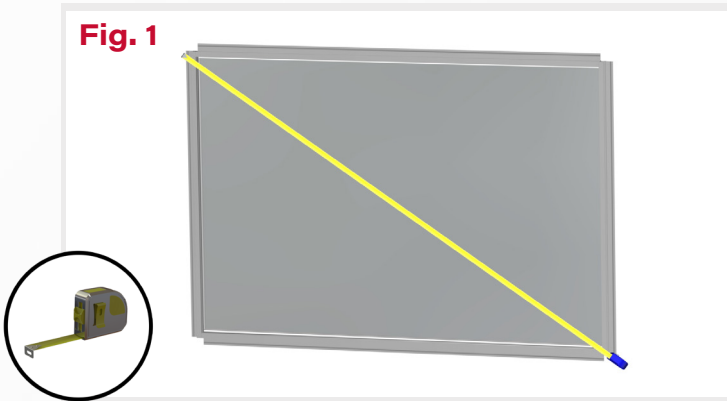
Nail Fin



Equal Leg

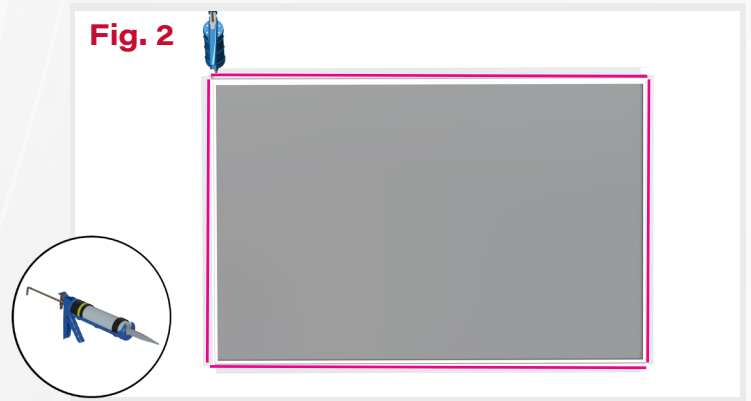
Nail Fin Installation Instructions

Fig. 1



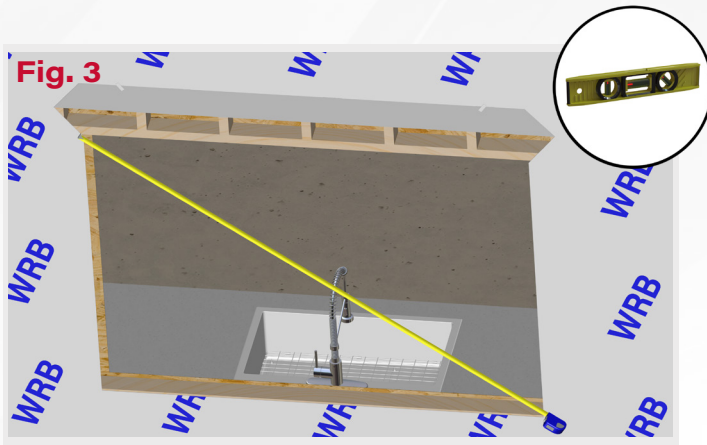
1. Use a tape measure to check for squareness.

Fig. 2



2. Apply sealant to the interior of all four nailfins.

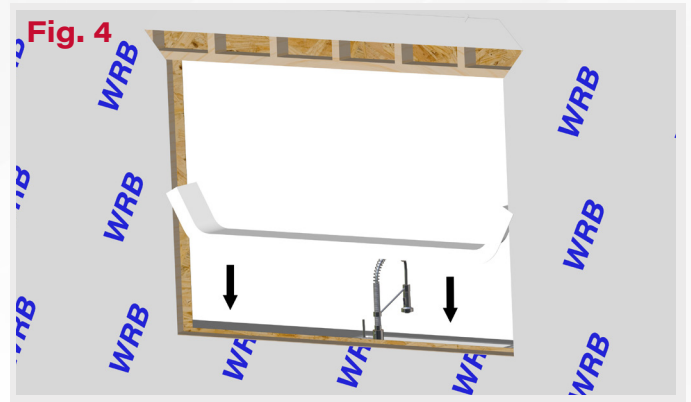
Fig. 3



3. Use a hand level to ensure the rough opening is level.

Use a tape measure to measure the rough opening for squareness.

Fig. 4

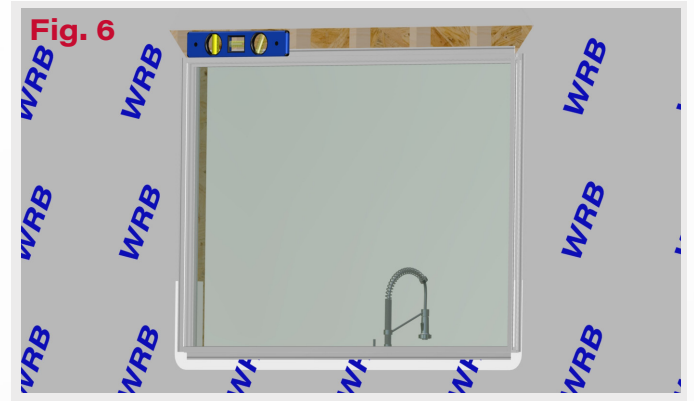
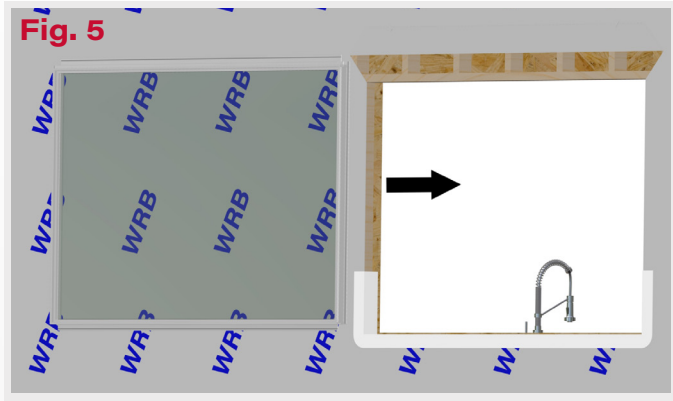


4. Apply sill flashing at the bottom of the rough opening.



Make sure to apply flashing and appropriate weather resistant barrier material, per AAMA Installation Masters Handbook.

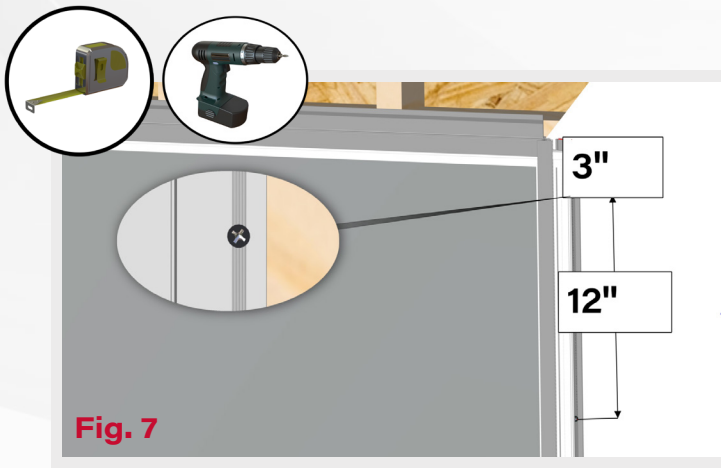
Nail Fin Installation Instructions (Cont.)



5. With some assistance, place the window in the rough opening.

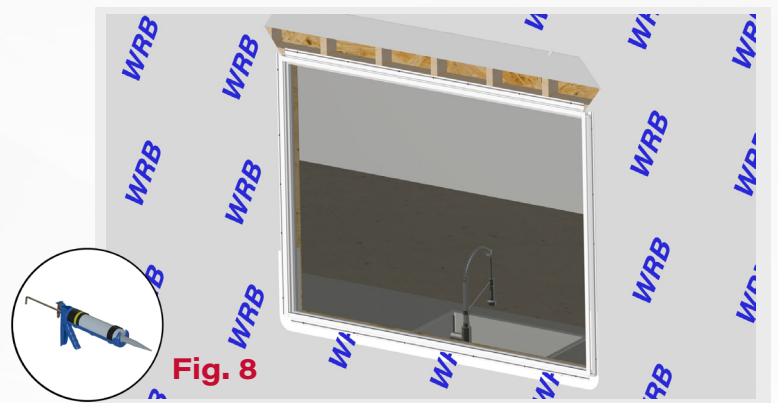
6. Use a hand level to ensure the unit is plumb and level with the rough opening.

Then shim to ensure the unit is square within the rough opening. If unit is not level and square, shim appropriately.



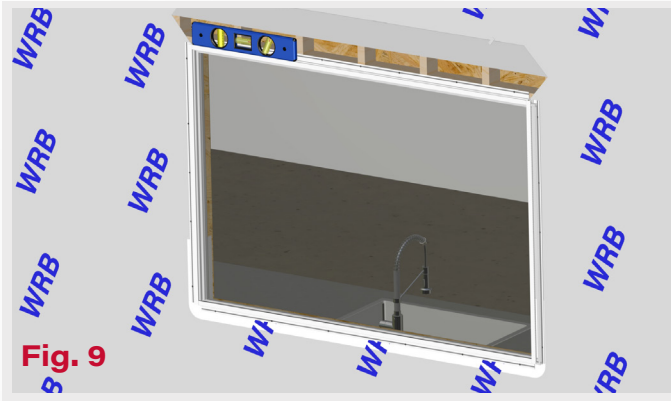
7. Fasten the frame to the structure using the provided screws.

Screws should be 3" from the edge of every nailfin, followed by 12" off center for each next screw, with the last screw falling 3" away from the edge of the nailfin.

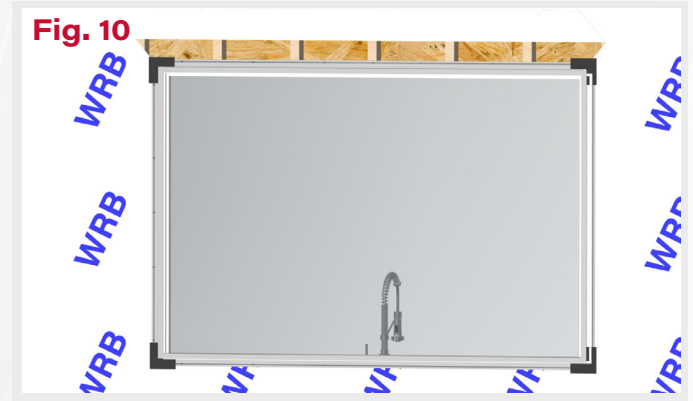


8. Seal all screws and edges once anchoring is complete.

Nail Fin Installation Instructions (Cont.)



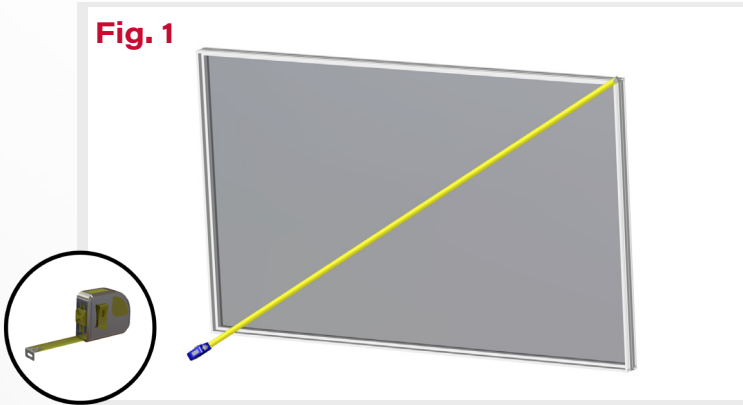
9. Verify the unit is square, plumb, and level.



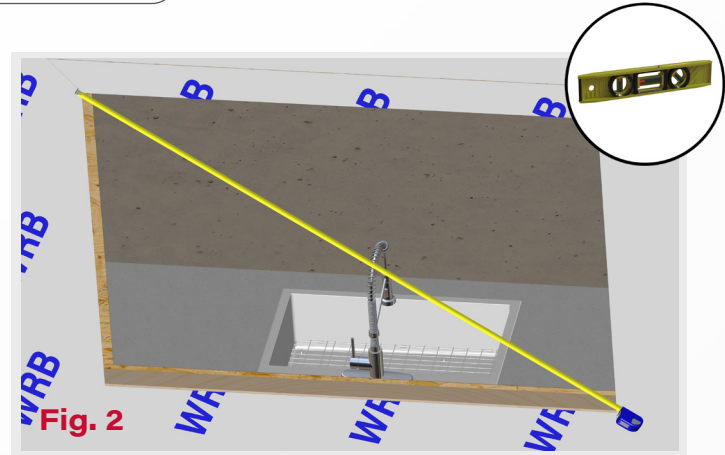
10. Once the window is fastened, cover all corners with the provided corner gaskets, making sure all nailfins are covered as much as possible.

Equal Leg Installation Instructions

Fig. 1

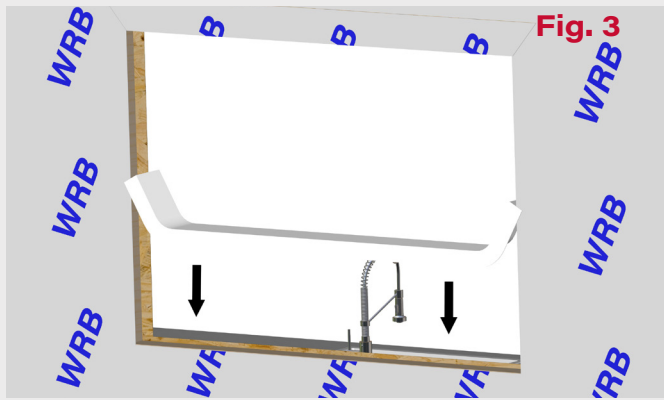


1. Use a tape measure to measure for squareness.

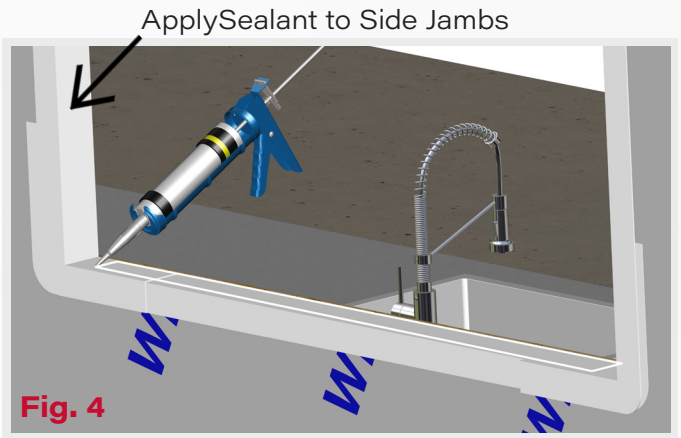


2. Use a tape measure to measure the rough opening for squareness.

Use a hand level sure the rough opening is level.



3. Apply sill flashing at the bottom of the rough opening.

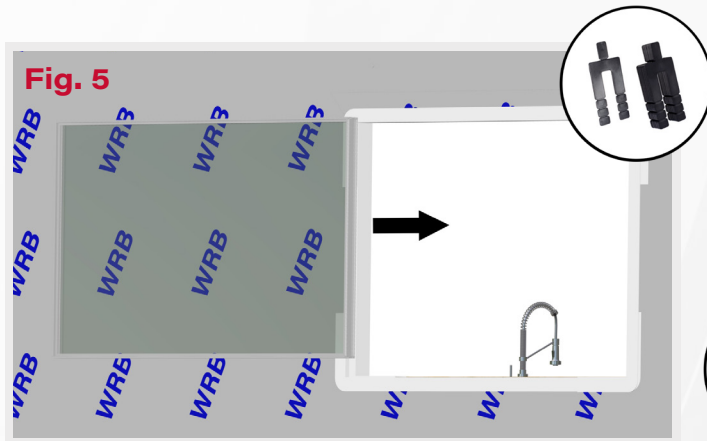


4. Before mounting the window, apply a 5/8" bead of sealant across the width of the opening and 4 inches up both jambs. Locate 2" from the outermost frame point.

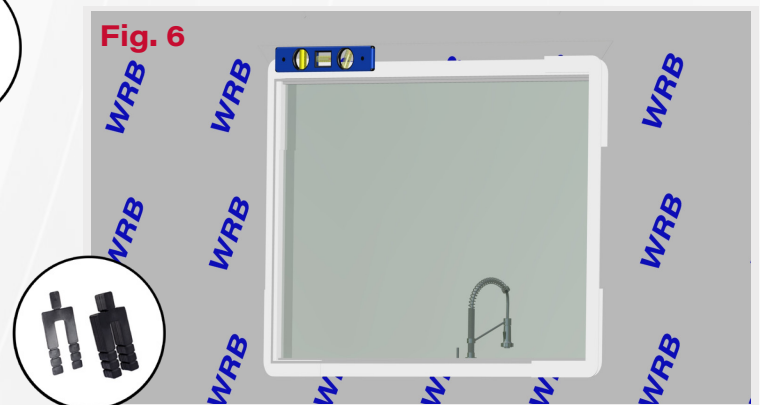


Make sure to apply flashing and appropriate weather resistant barrier material, per AAMA Installation Masters Handbook.

Equal Leg Installation Instructions (Cont.)



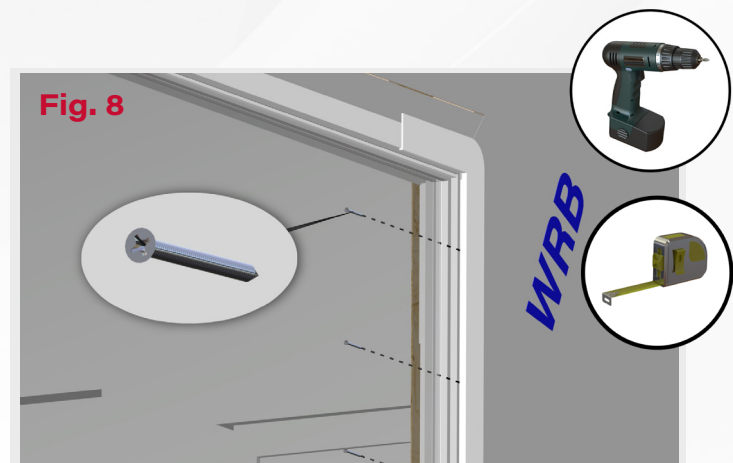
5. With some assistance, place the window in the rough opening, and shim the window into place.



6. Ensure the window is plumb, level, and square. Re-shim as needed to accomplish this.



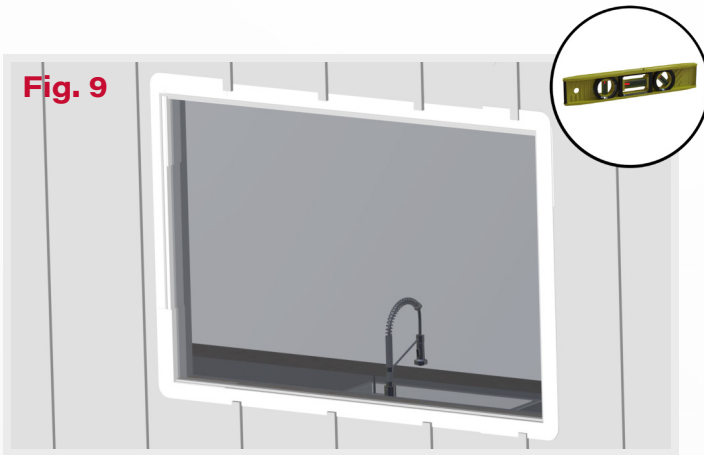
7. Use a drill to countersink and drill all anchoring holes through the interior of the frame. Countersink holes deep enough to make screws underflush with the frame.



8. Pump silicone into all drilled holes to seal. Fasten the frame to the structure using the provided screws.

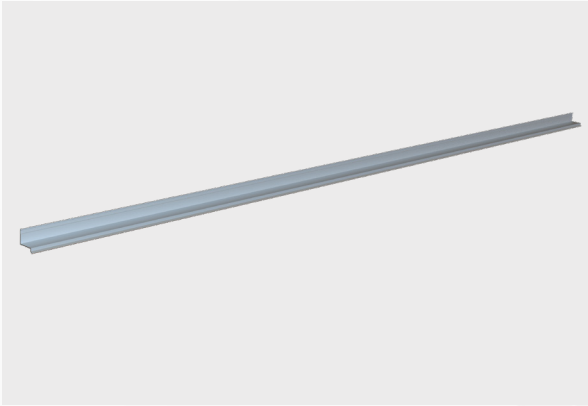
Holes should be 6" from the corner, followed by 12" off center for the next screw. Repeat this step for every side of the frame.

Equal Leg Installation Instructions (Cont.)

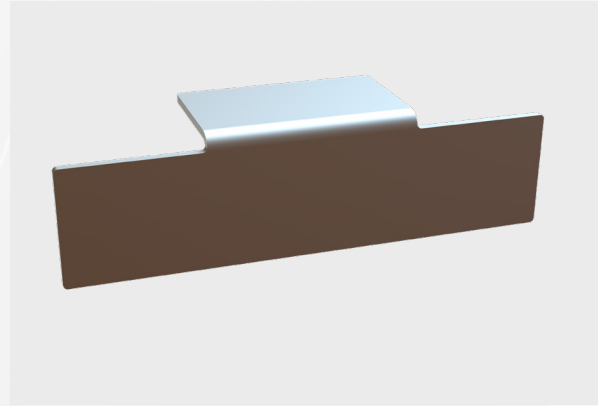


9. Apply backer rod and sealant to the perimeter of the frame, to seal the frame to the exterior waterproofing membrane. Ensure every edge is properly sealed.

Mull Sealing Instructions



Drip Cap



**Mull Bridge
(Only Used For
Nailfin Mulling)**

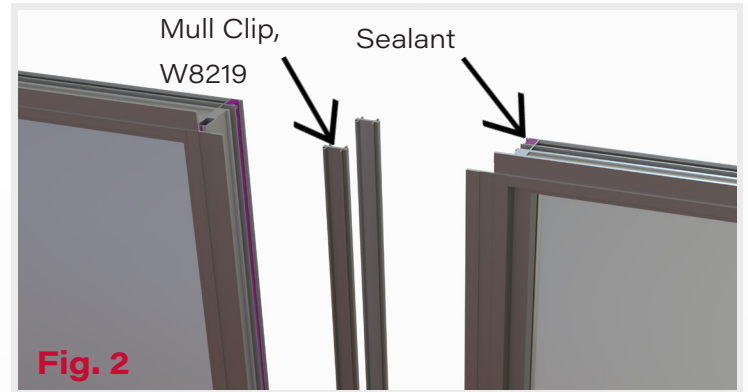


Mull Clip W8219

Mulling Instructions


Fig. 1

1. The Mull kit can be used for both vertical and horizontal windows, as well as for mulling Doors.


Fig. 2

2. Fill the female mulling features of each frame with sealant along their entire length. Then place the mull clip, W8219 into one side and snap both windows into place. Clamps may be used to ensure a fully snapped together unit.


Fig. 3

3. Make sure the mull unit is even and both windows are level with each other.


Fig. 4

4. Continue Installing the Window on to the wall. Install as previously shown for either Nail Fin or Equal Leg Installation.

Orient and press the mull bridge into place between and in front of the nailfins. There should be a good amount of sealant where the mull bridge is placed for a proper seal.

Mulling Instructions



Fig. 5

5. Lay a steady bead of sealant along the entire length of all nailfins on the head.

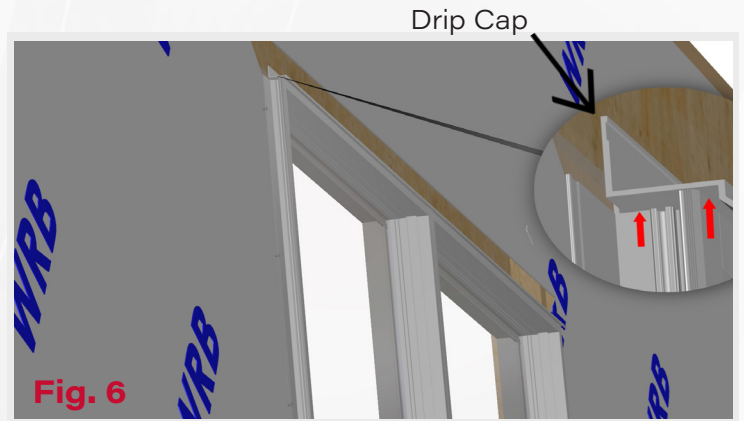


Fig. 6

6. After applying sealant, place the drip cap on top of the frame, and make sure it's flush with the nailfin and the frame.

Once the drip cap is in place, apply sealant to the underside, as well as both outer edges.

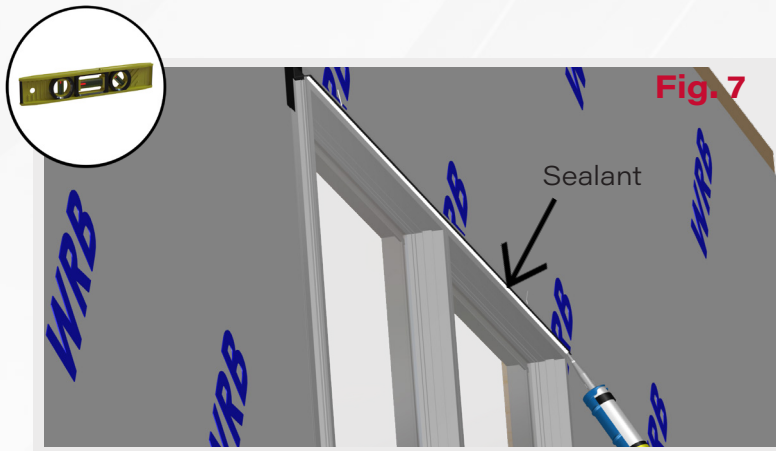


Fig. 7

7. Proceed with final waterproofing membrane applied over the nail fin.

Ensure a complete seal.

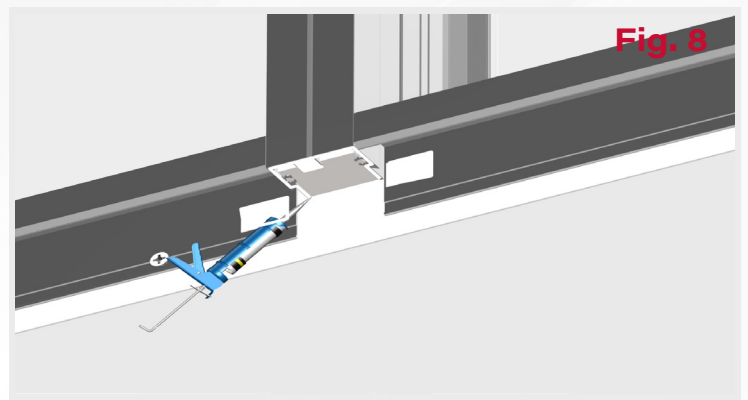
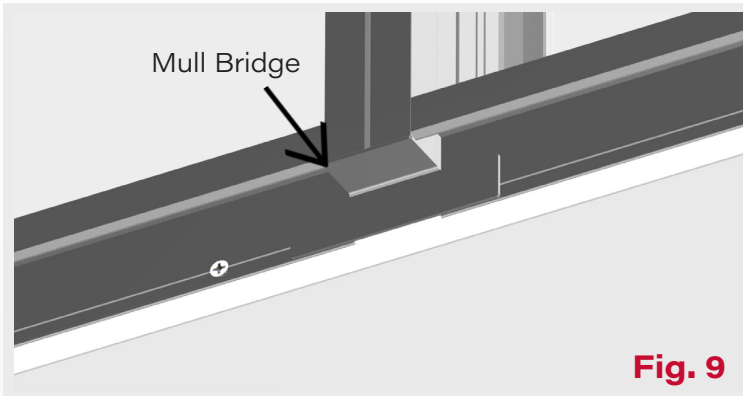


Fig. 8

8. Locate the bottom of the unit and install the mullion bridge. Lay a bead of sealant on the foam backer, the edges of the nailfins near the gap between the nailfins, and in the gap between the nailfins.

Mulling Instructions



9. Orient and press the mull bridge into place between and in front of the nailfins.

There should be a good amount of sealant where the mull bridge is placed for a proper seal.



10. **Congratulations! The mulling process is now complete.**

Series 8630-Direct Set Window Installation Instructions

Upon completion of installation, ensure all connections are tight and secure in accordance with the installation manual and AAMA Installation Masters standards. For more information, give us a call or visit us online.



We recommend all Western Window Systems products be installed by experienced professionals.



Contact Us

2200 E. Riverview Dr., Phoenix, AZ 85034

877-398-9643

www.westernwindowsystems.com