

PERFORMANCE SERIES 7665

PASS-THROUGH AWNING WINDOW



Engineered for seamless indoor-outdoor transitions, the Series 7665 Pass-Through Awning Window is ideal for kitchens or bars that flow into outdoor living spaces. With its continuous hinge and pressurized gas struts, this window offers smooth, effortless operation—making it easy to bring the outside in. Its sleek, contemporary design adds a touch of modern sophistication to any space.

Energy Efficiency

This thermally broken aluminum window is equipped with standard low-E, argon-filled dual-pane glass from Cardinal IG. This glass option enhances comfort by reducing heat transfer while also protecting interiors from harmful UV rays. Optional glass types are available to meet specific design and performance requirements.

Hardware

The window features durable, corrosion-resistant hardware, including pressurized gas struts that hold the sash open at a 90-degree angle. The continuous hinge ensures reliability, while the USA-made pressurized gas struts are tested to 25,000 cycles, guaranteeing long-lasting performance for years to come.

Finishes

Bronze Anodized and Satin Anodized come standard with a Class 1 coating thickness for increased smoothness and durability. Our designer colors include a high-quality paint finish that conforms to a minimum rating of AAMA-2605, currently the highest rating for organic finishes.

Performance Table

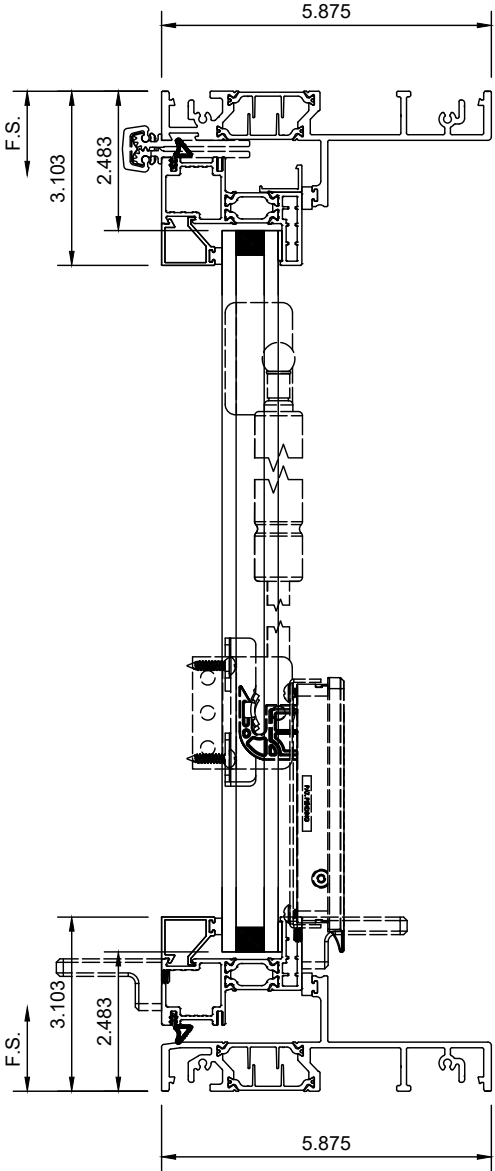
Frame Depth	5.875
AAMA Product Designation (AAMA/WDMA/CSA101/I.S.2/A440 Designation)	CLASS LC - PG25
Test Configuration	72 x 48 in (1829 x 1219 mm)
Air Infiltration (Per ASTM E 283)	0.60 L/s/m ² (0.12 cfm/ft ²)
Air Exfiltration (ASTM E283)	0.17 L/s/m ² (0.03 cfm/ft ²)
Water Resistance (Per ASTM E 547)	180 Pa (3.76 psf)
Uniform Load Deflection (Per ASTM E 330)	0.8 mm (0.03") / 0.3 mm (0.01")
Uniform Load Structural (Per ASTM E 330)	0.3 mm (0.01") / 0.5 mm (0.02)
Force Entry Resistance	Pass
Opening Force	155 N (35 lbf) max
U-Factor (Per NFRC 102)	0.40

*Actual values may vary depending on product specifications and configuration.
* Glass Makeup = 1" OA E366/Argon/Clear*

PERFORMANCE SERIES 7665 PASS-THROUGH AWNING WINDOW



For more CAD details scan here

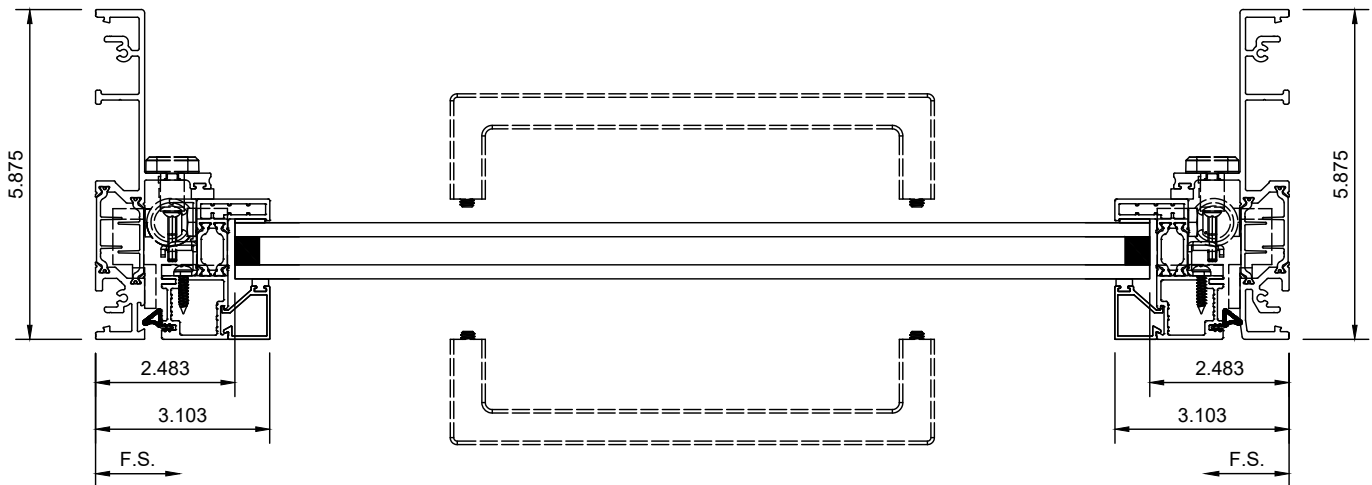


Equal Leg - 1.00 Glass with Sill

PERFORMANCE SERIES 7665
**PASS-THROUGH
AWNING WINDOW**



For more CAD
details scan here

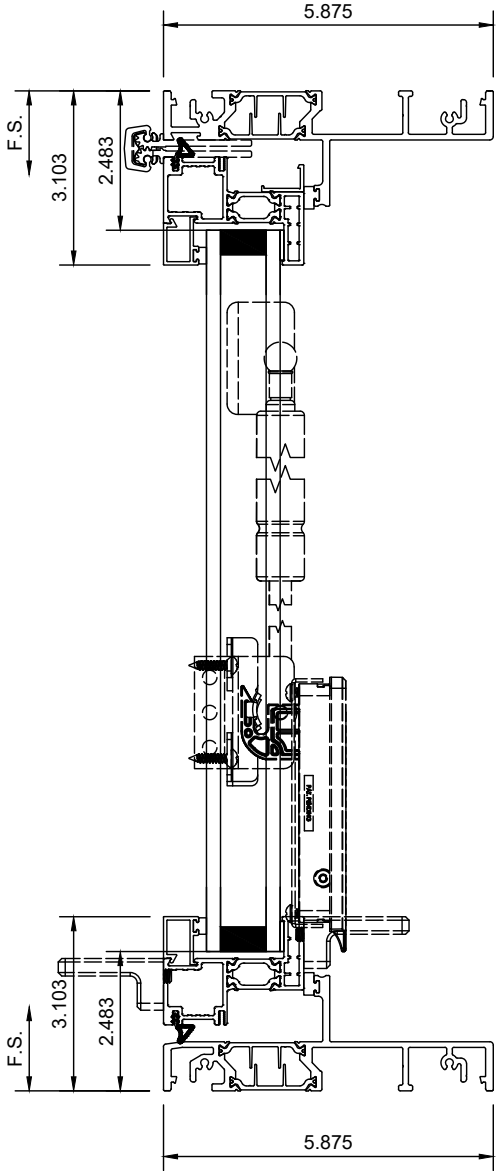


Equal Leg - 1.00 Glass with Sill - Top View with Handles

PERFORMANCE SERIES 7665 PASS-THROUGH AWNING WINDOW



For more CAD details scan here

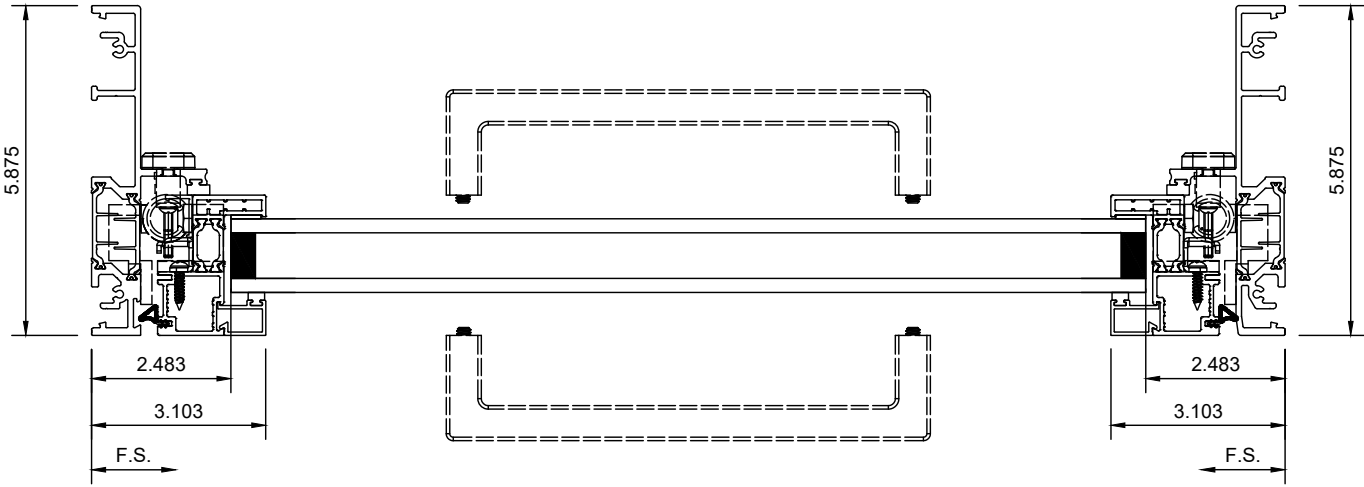


Equal Leg - 1.30 Glass with Sill

PERFORMANCE SERIES 7665
**PASS-THROUGH
AWNING WINDOW**



For more CAD
details scan here



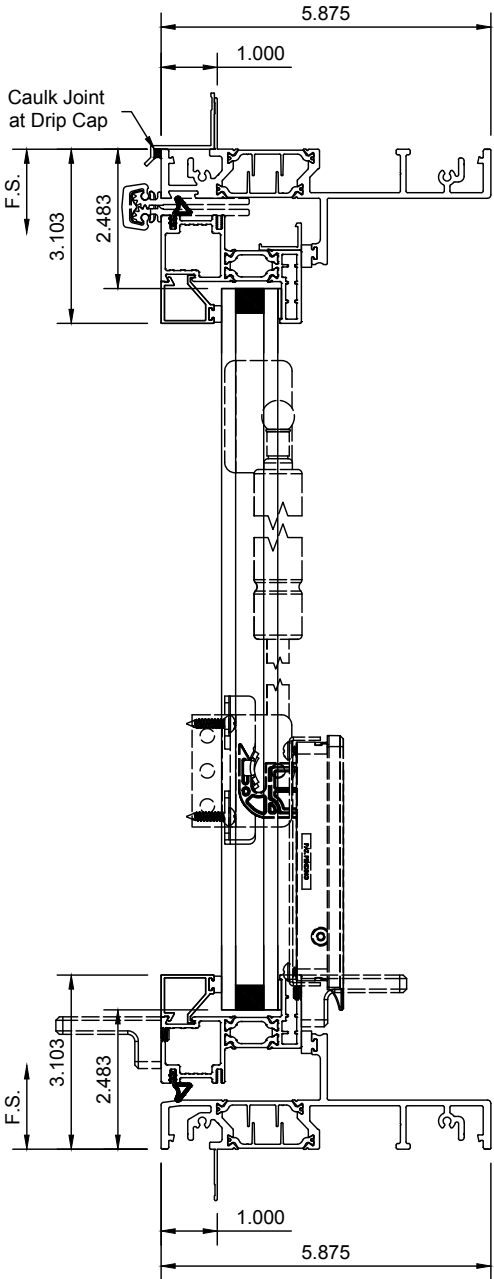
Equal Leg - 1.30 Glass with Sill - Top View with Handles

PERFORMANCE SERIES 7665

PASS-THROUGH AWNING WINDOW



For more CAD details scan here

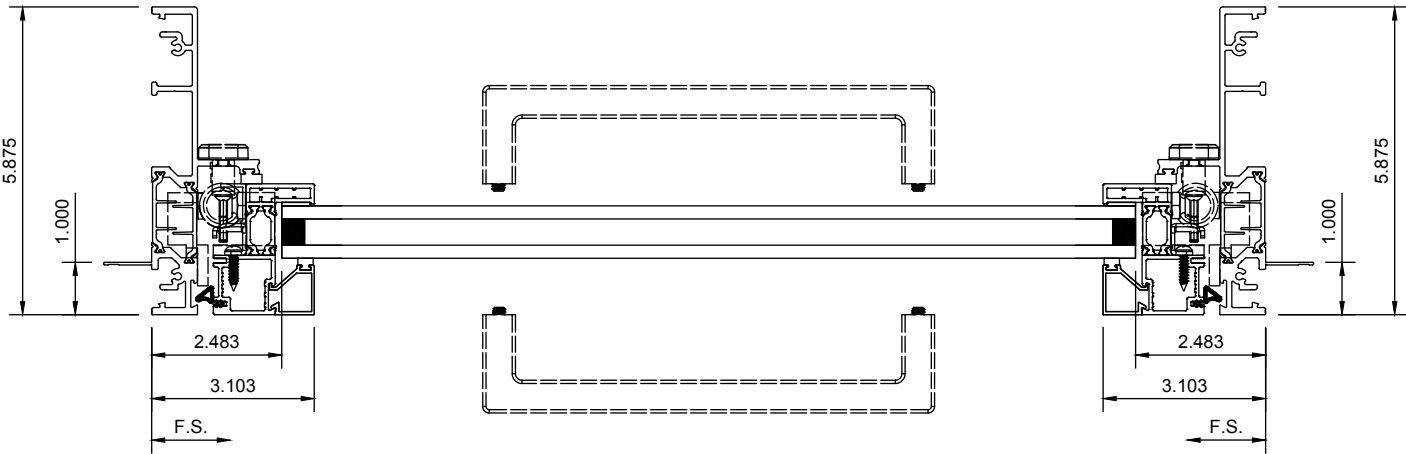


Nail Fin Drip Cap - 1.00 Glass with Sill

PERFORMANCE SERIES 7665
**PASS-THROUGH
AWNING WINDOW**



For more CAD
details scan here



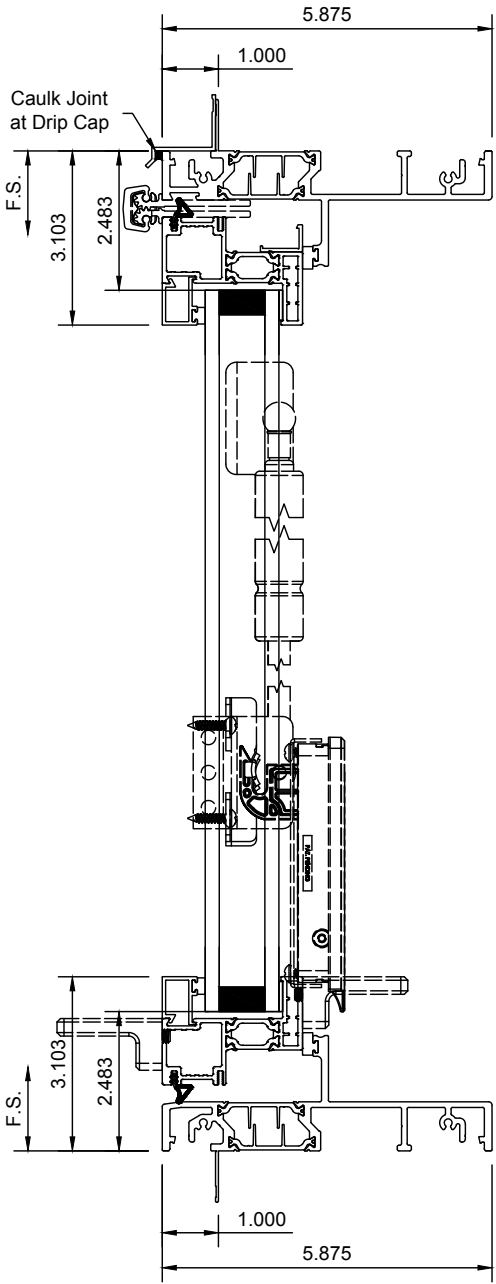
Nail Fin Drip Cap - 1.00 Glass with Sill - Top View with Handles

PERFORMANCE SERIES 7665

PASS-THROUGH AWNING WINDOW



For more CAD details scan here

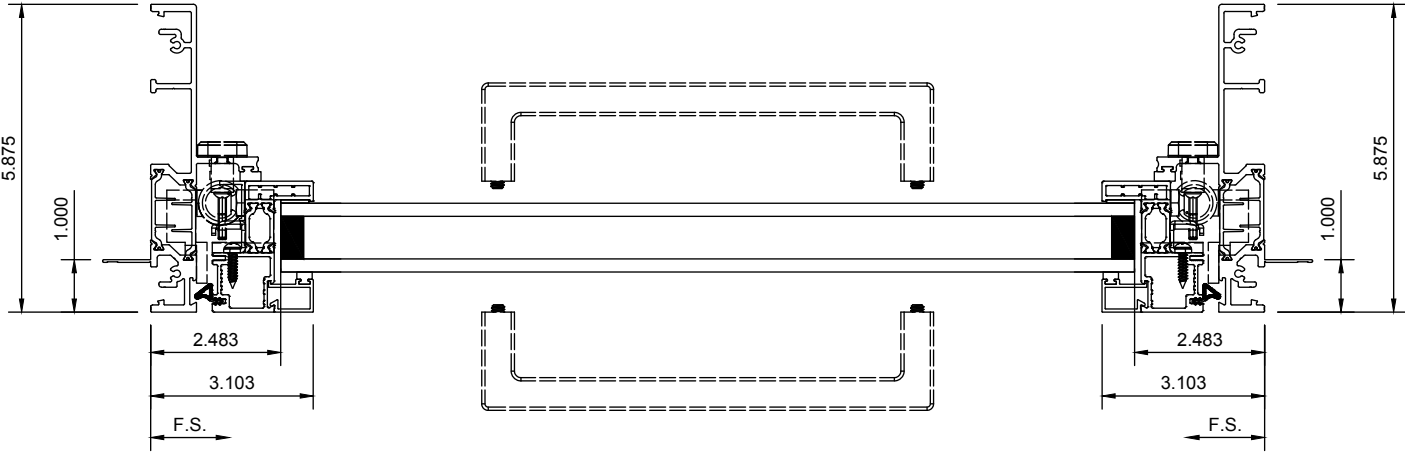


Nail Fin Drip Cap - 1.30 Glass with Sill

PERFORMANCE SERIES 7665
**PASS-THROUGH
AWNING WINDOW**



For more CAD
details scan here



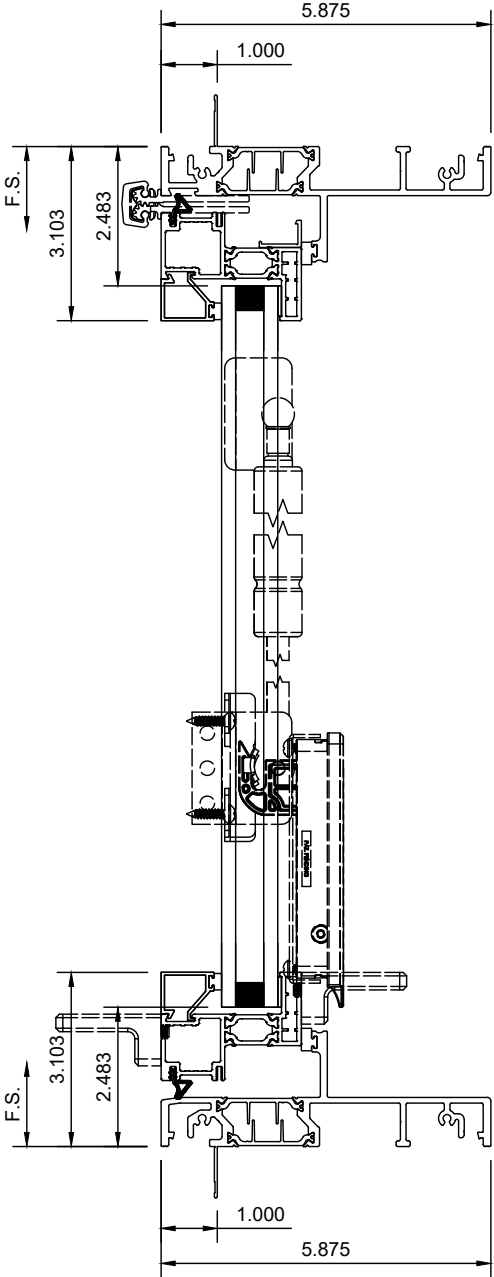
Nail Fin Drip Cap - 1.30 Glass with Sill - Top View with Handles

PERFORMANCE SERIES 7665

PASS-THROUGH AWNING WINDOW



For more CAD details scan here



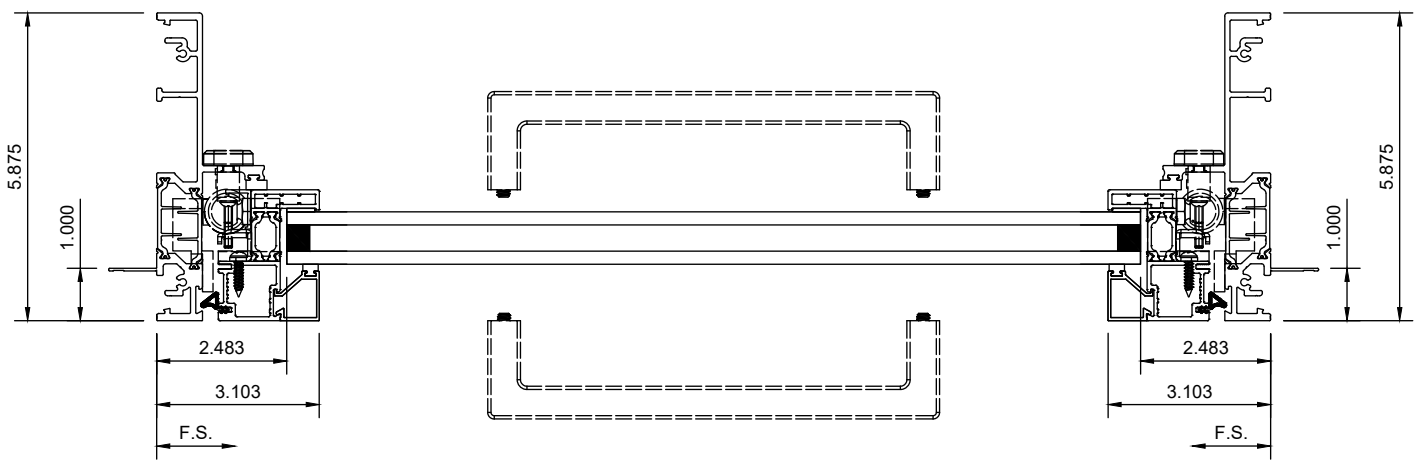
Nail Fin No Drip Cap - 1.00 Glass with Sill

PERFORMANCE SERIES 7665

PASS-THROUGH AWNING WINDOW



For more CAD
details scan here

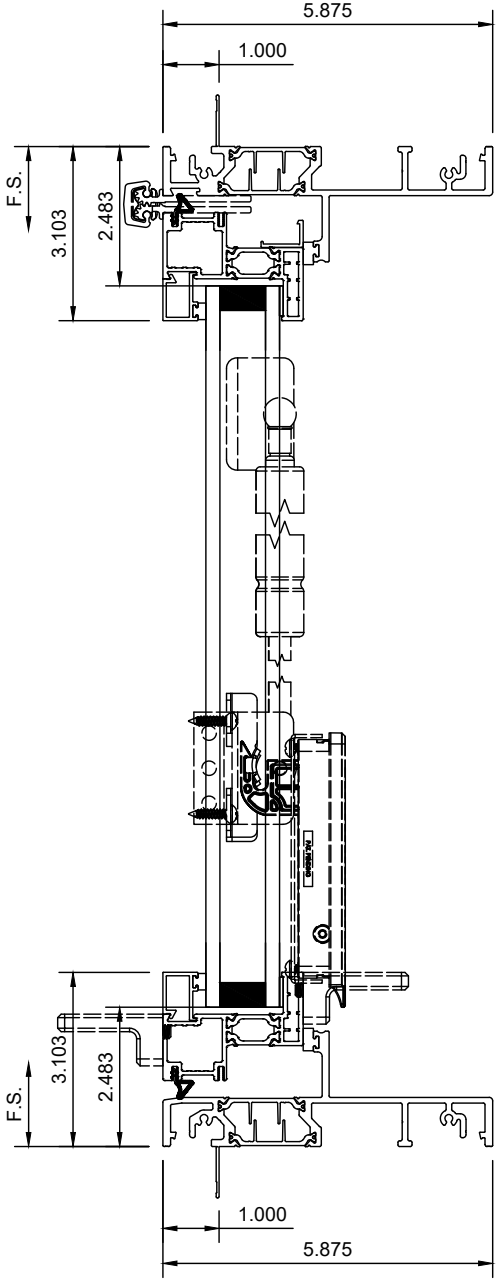


Nail Fin No Drip Cap - 1.00 Glass with Sill - Top View with Handles

PERFORMANCE SERIES 7665 PASS-THROUGH AWNING WINDOW



For more CAD details scan here

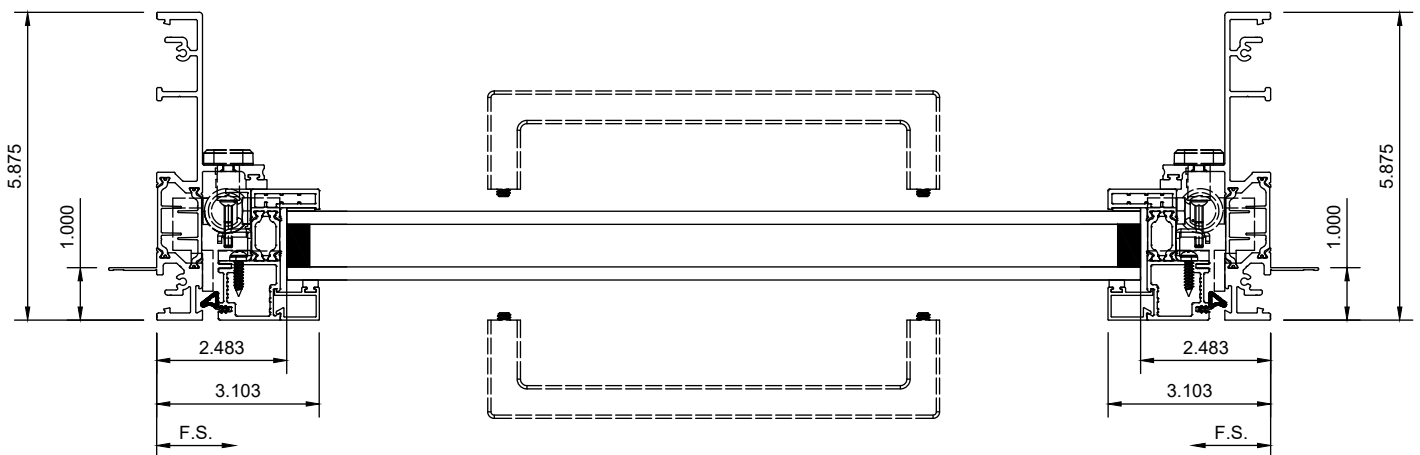


Nail Fin No Drip Cap - 1.30 Glass with Sill

PERFORMANCE SERIES 7665
**PASS-THROUGH
AWNING WINDOW**



For more CAD
details scan here



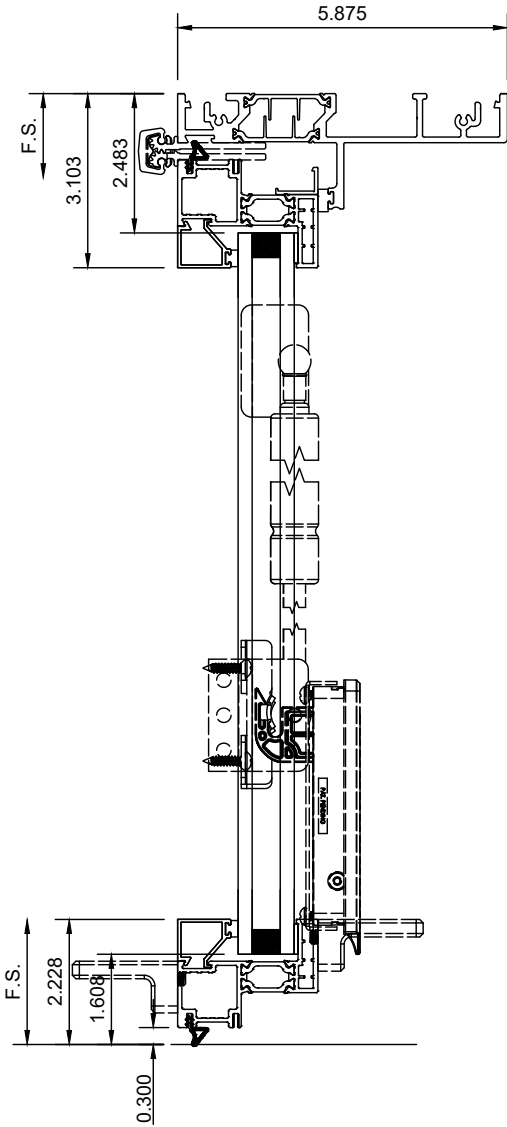
Nail Fin No Drip Cap - 1.30 Glass with Sill - Top View with Handles

PERFORMANCE SERIES 7665

PASS-THROUGH AWNING WINDOW



For more CAD details scan here

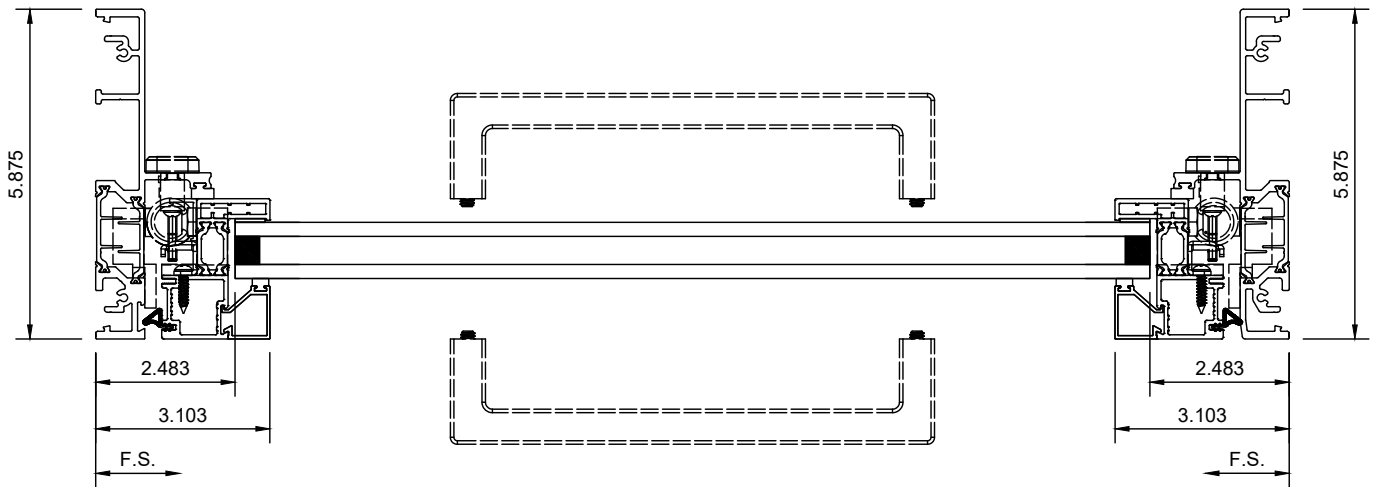


Equal Leg - 1.00 Glass with No Sill

PERFORMANCE SERIES 7665
**PASS-THROUGH
AWNING WINDOW**



For more CAD
details scan here

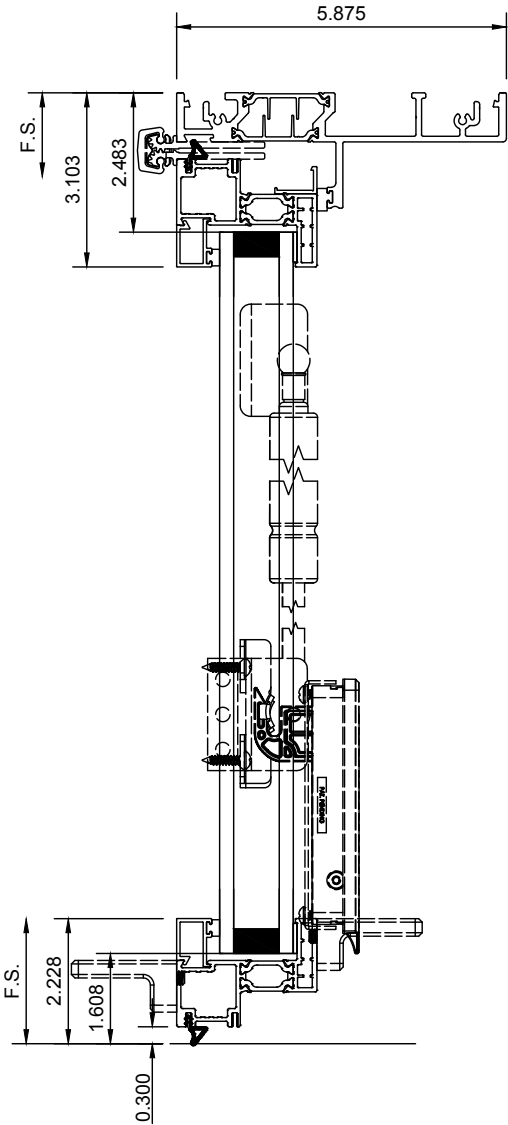


Equal Leg - 1.00 Glass with No Sill - Top View with Handles

PERFORMANCE SERIES 7665 PASS-THROUGH AWNING WINDOW



For more CAD details scan here

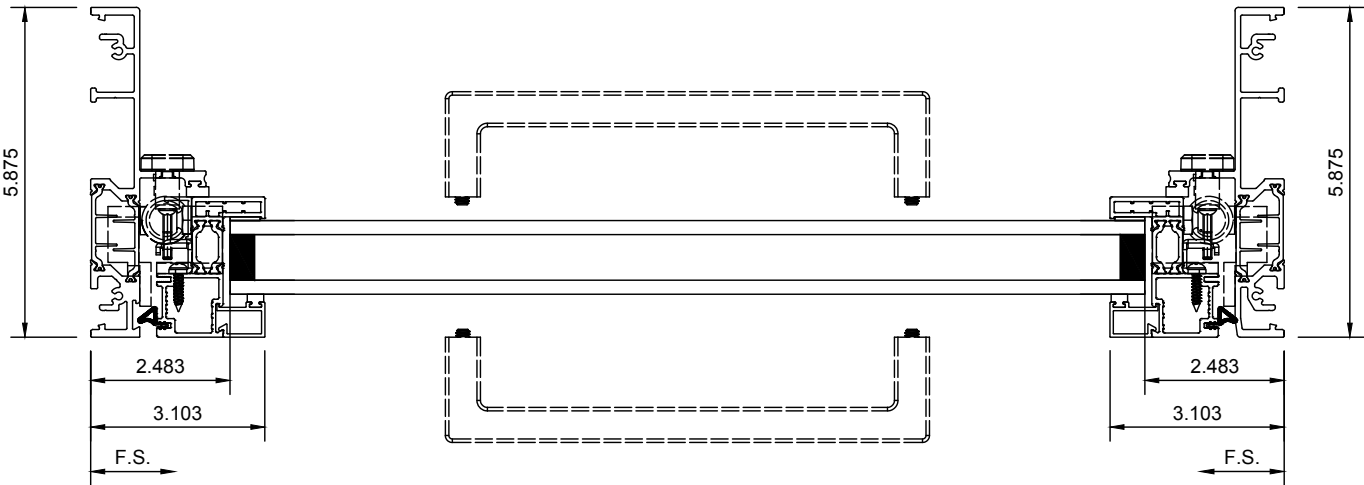


Equal Leg - 1.30 Glass with No Sill

PERFORMANCE SERIES 7665
**PASS-THROUGH
AWNING WINDOW**



For more CAD
details scan here



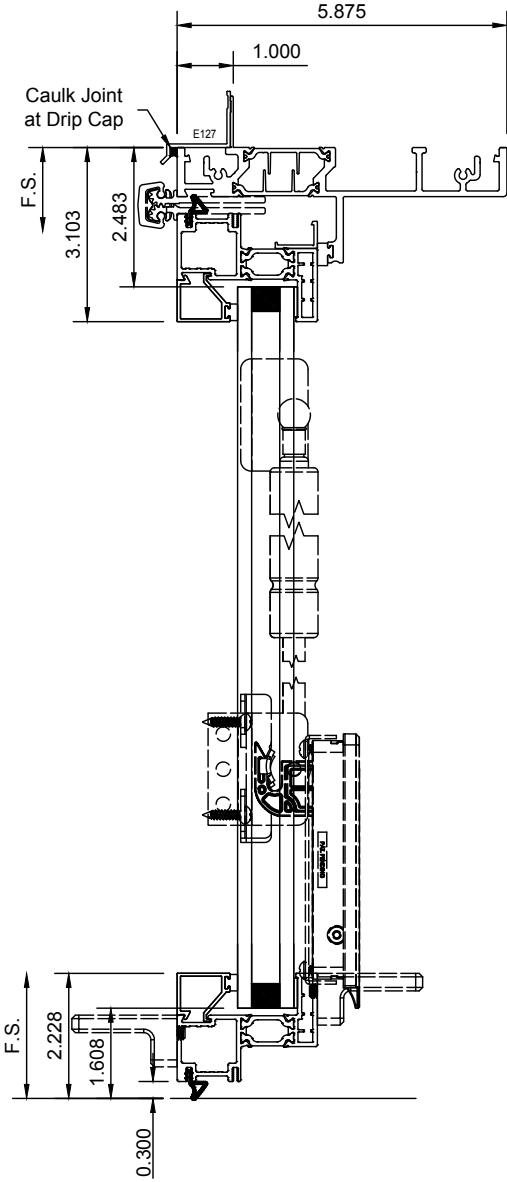
Equal Leg - 1.30 Glass with No Sill - Top View with Handles

PERFORMANCE SERIES 7665

PASS-THROUGH AWNING WINDOW



For more CAD details scan here

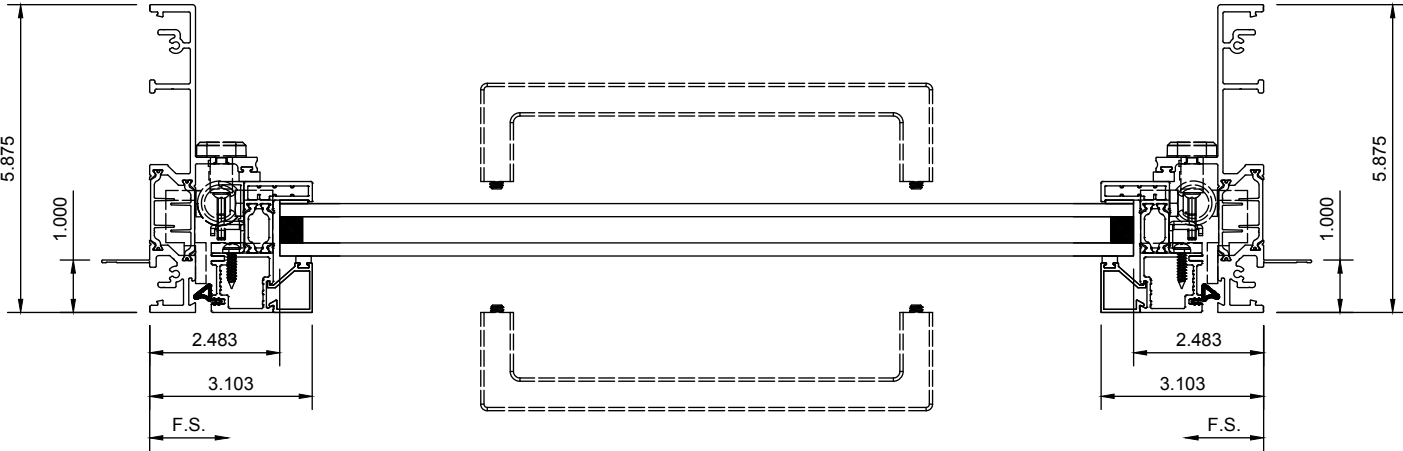


Nail Fin Drip Cap - 1.00 Glass with No Sill

PERFORMANCE SERIES 7665
**PASS-THROUGH
AWNING WINDOW**



For more CAD
details scan here



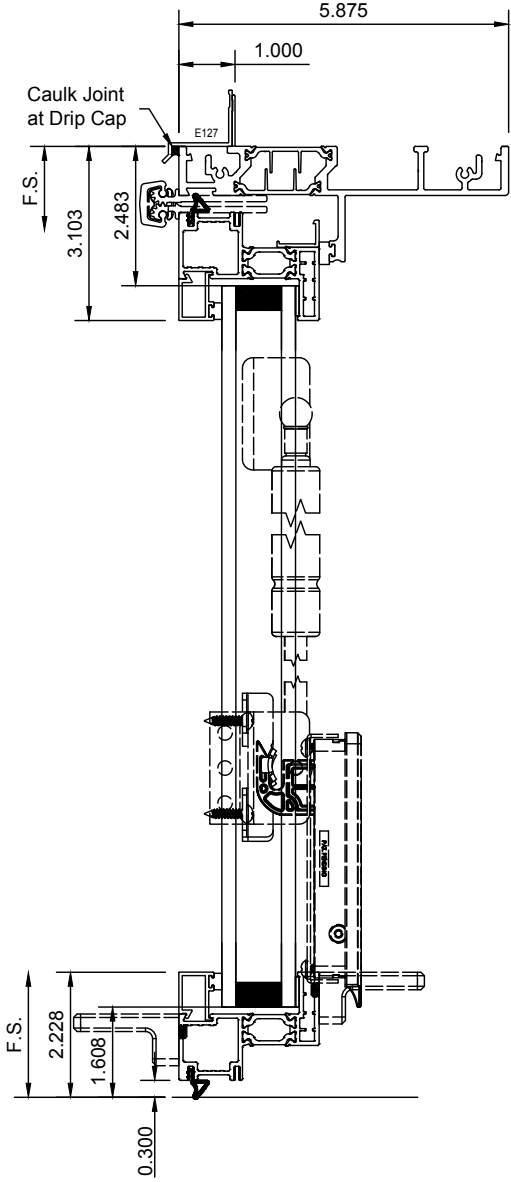
Nail Fin Drip Cap - 1.00 Glass with No Sill - Top View with Handles

PERFORMANCE SERIES 7665

PASS-THROUGH AWNING WINDOW



For more CAD details scan here

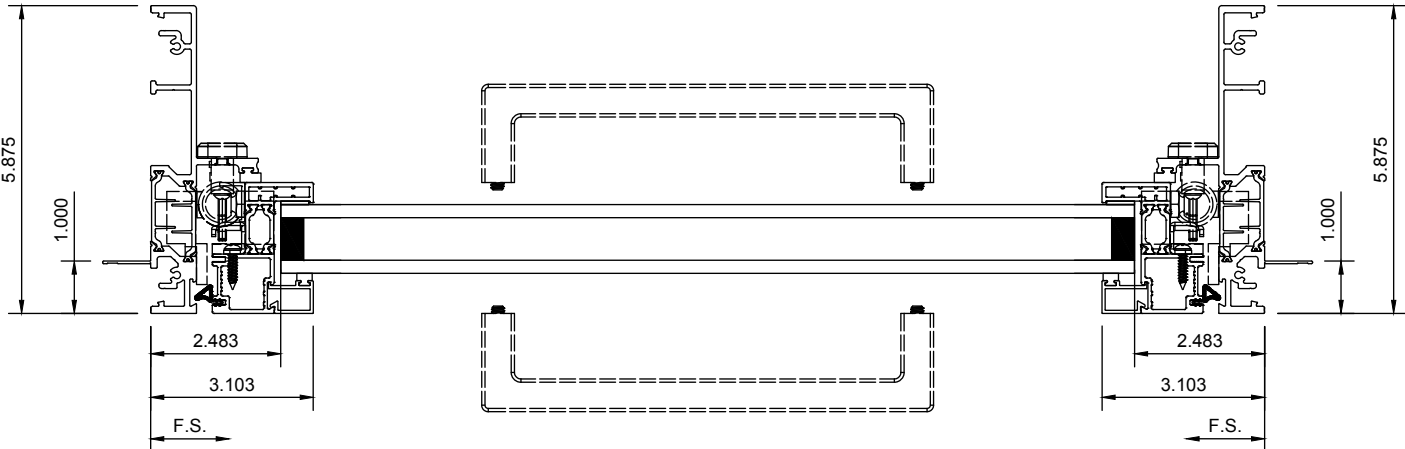


Nail Fin Drip Cap - 1.30 Glass with No Sill

PERFORMANCE SERIES 7665
**PASS-THROUGH
AWNING WINDOW**



For more CAD
details scan here



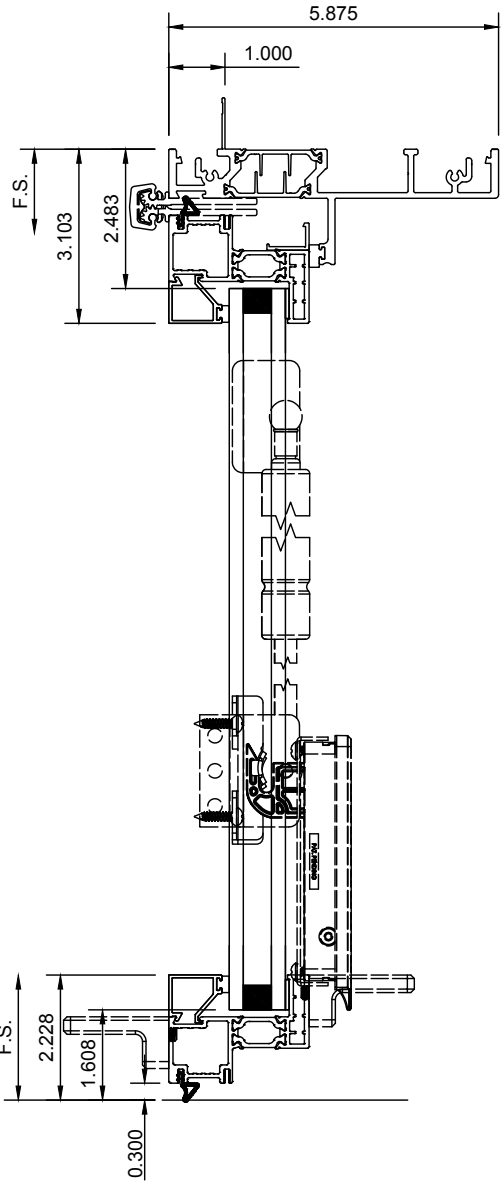
Nail Fin Drip Cap - 1.30 Glass with No Sill - Top View with Handles

PERFORMANCE SERIES 7665

PASS-THROUGH AWNING WINDOW



For more CAD
details scan here

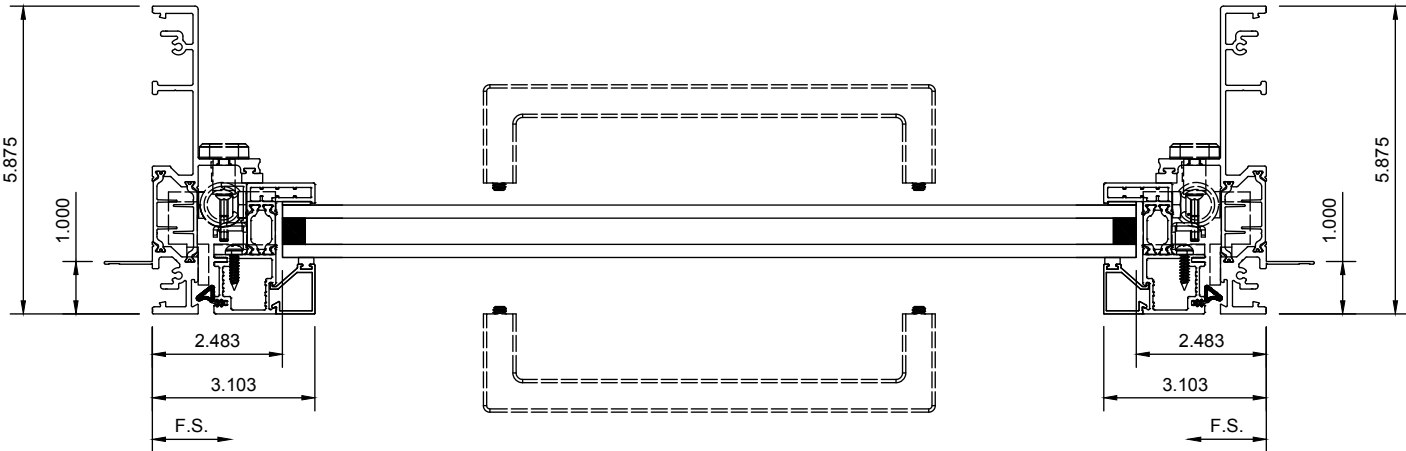


Nail Fin No Drip Cap - 1.00 Glass with No Sill

PERFORMANCE SERIES 7665
**PASS-THROUGH
AWNING WINDOW**



For more CAD
details scan here

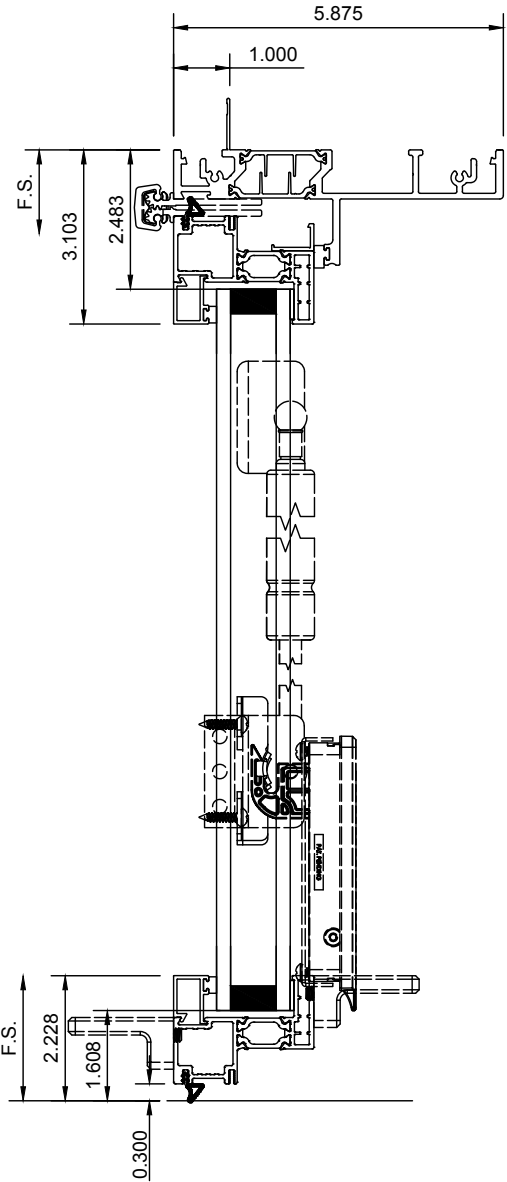


Nail Fin No Drip Cap - 1.00 Glass with No Sill - Top View with Handles

PERFORMANCE SERIES 7665 PASS-THROUGH AWNING WINDOW



For more CAD details scan here

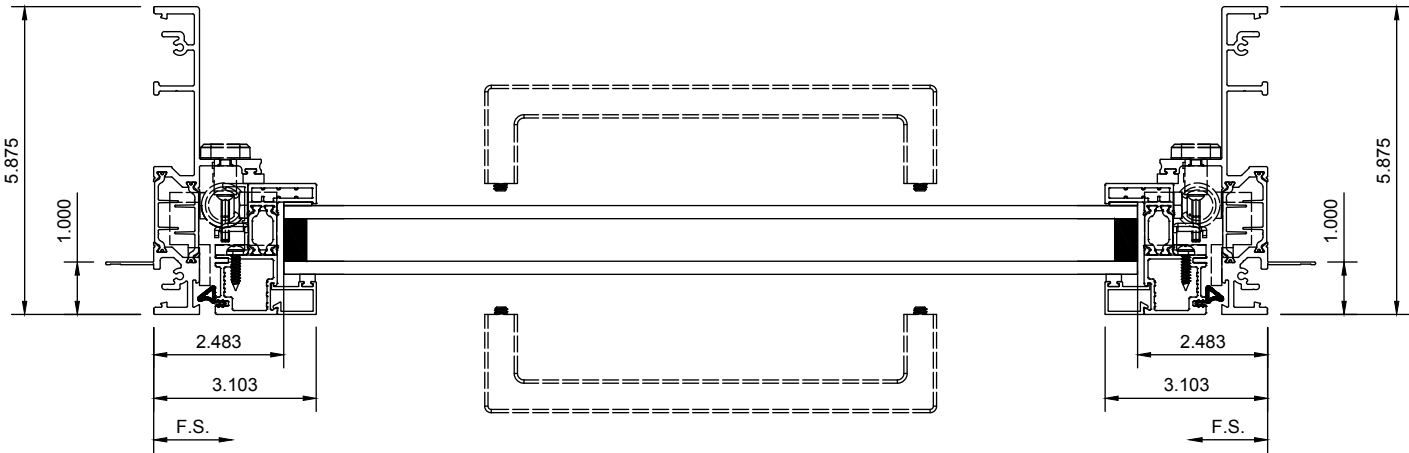


Nail Fin No Drip Cap - 1.30 Glass with No Sill

PERFORMANCE SERIES 7665
**PASS-THROUGH
AWNING WINDOW**



For more CAD
details scan here



Nail Fin No Drip Cap - 1.30 Glass with No Sill - Top View with Handles