

# Build Better



**Volume Program** | Classic Line  
Aluminum Multi-Slide Door Systems





## Changing Construction

We created the Volume Program to help production builders differentiate their homes and drive sales through indoor-outdoor living.

Founded on four key ideas, the Volume Program features our high-quality multi-slide and bi-fold doors offered at discounted prices and with shortened production lead times. Model home discounts and exceptional customer service are also offered.



### Design

The ability of our high-quality door systems to completely open up to the outside is what makes them so unique. Large rolling glass panels expand living areas, frame beautiful views, and let in light and fresh air. Options such as unique sizes, configurations, handles, and tracks let you customize our doors for any project.



### Build

The Volume Program's discounted prices and shortened production lead times help keep you on track and on budget. Want to use an existing supplier? Our knowledgeable staff can provide sales and installation training and ongoing assistance without interrupting workflow.



### Sell

Because our doors are typically a preferred upgrade option with homebuyers, many builders choose to include them as standard features in their homes. By expanding space, they create indoor-outdoor areas perfect for entertaining, cooking out, or simply relaxing with family and friends.



### Profit

By offering upgrades such as pavers, outdoor barbecues, and landscaping packages, you can inspire and delight homebuyers eager to enhance their new outdoor living rooms. This helps drive revenue and offers selling options that can be tailored to any building project.





## Home Design Is the #1 Opportunity

Although location and price are the top motivators, home layout is the #1 reason consumers are looking for a new home.



Would pay a premium for a lot with great views.



Would pay another \$12-15K for a retractable sliding glass door.



Want to feel the outdoors inside and outside the home.

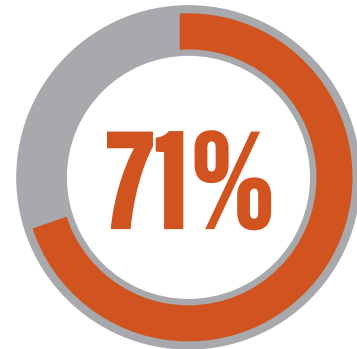


Would pay a \$2,500 premium for accordion windows.

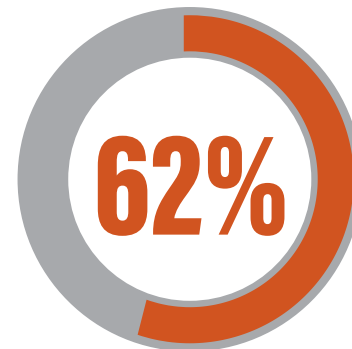
Source: John Burns Real Estate Consulting

## Extended Living Space Is Key

Creating livable spaces that extend beyond the walls of the home conveys both a sense of privacy and a sense of freedom from the confines of more traditional spaces inside the home.



Want extra living space off the back of the house.



View their outdoor space as a connection to the outdoors.

## Skillful Planning Drives Demand

Providing a well-designed outdoor area where one can enjoy a cup of coffee, gather with family, or entertain is the top reason homebuyers would increase their consideration of a home.



View their home as a sanctuary.

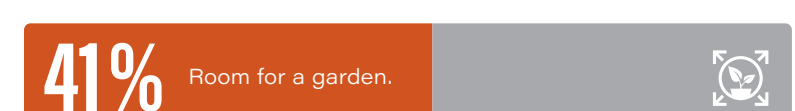
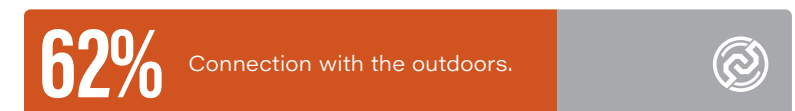
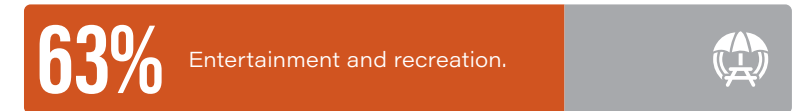
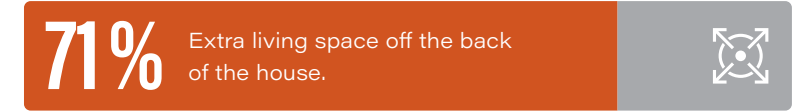


Would consider a smaller yard if the backyard was designed as a great entertainment space.



Cited their backyard as the third place to be when gathering with family or friends.

## How New-Home Shoppers Imagine Their Outdoor Space





Our Series 600 Classic Line of high-quality aluminum multi-slide and bi-fold door systems combines exceptional performance and durability with a clean, contemporary aesthetic. Designed to differentiate and drive sales, they feature a variety of sizes, configurations, and options to further your originality. No wonder you'll find them in so many communities across the country.





---

## The Choice of Builders for Over Two Decades

Western Window Systems' Series 600 Multi-Slide Door features moving walls of glass that stack or slide into pockets for extra-wide openings that eliminate the barrier between indoors and out.

Thermally broken aluminum and dual-pane low-E glass make the Series 600 energy efficient. Sealed stainless steel ball bearing rollers make it easy to operate, even with extreme panel weights. And a 90-degree alternative eliminates a connecting post for uninterrupted indoor-outdoor living.

---

**"I've worked with many different styles and they're not nearly as smooth as this multi-slide door." - Bethany McSorley, Scott Felder Homes**



# Build Better





## Clean Design

A 2.5" stile, wide panels, and modern details allow for more light and glass.

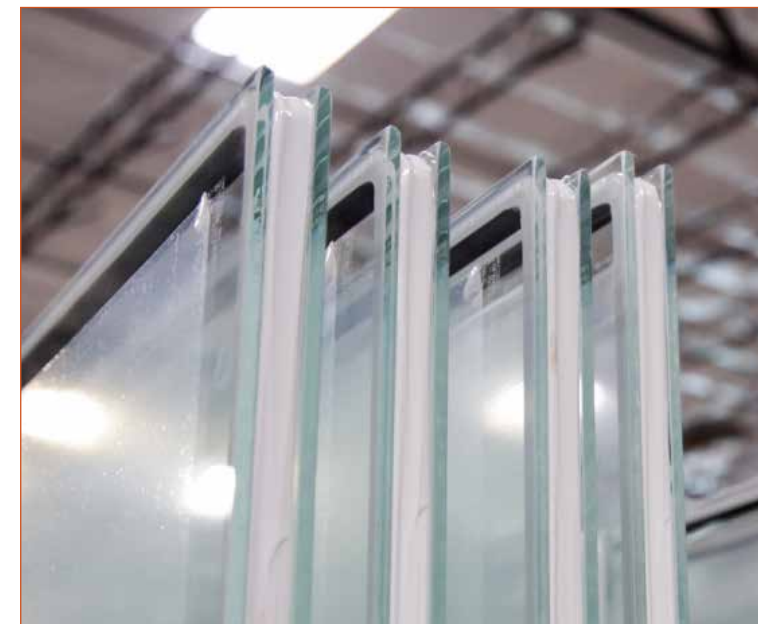
## Less Energy, More Savings

To deliver energy efficiency in a variety of weather conditions, the Series 600 has a 0.38 U-value with a water barrier sill.



## Concealed Locking System

Our multi-slide and bi-fold doors feature a hidden stainless-steel multi-point lock to secure large panels, providing additional strength and protection.



## Climate-Ready Glass

Our multi-slide and bi-fold doors feature low-E, argon-filled, dual-pane glass from Cardinal IG for a balance of solar control and high visibility. Pre-applied Cardinal Preserve Film protects glass during installation.

## Tested for Durability

Our products are subjected to air, water, and structural testing and are AAMA- and NFRC-tested and certified.



## Smooth Operation

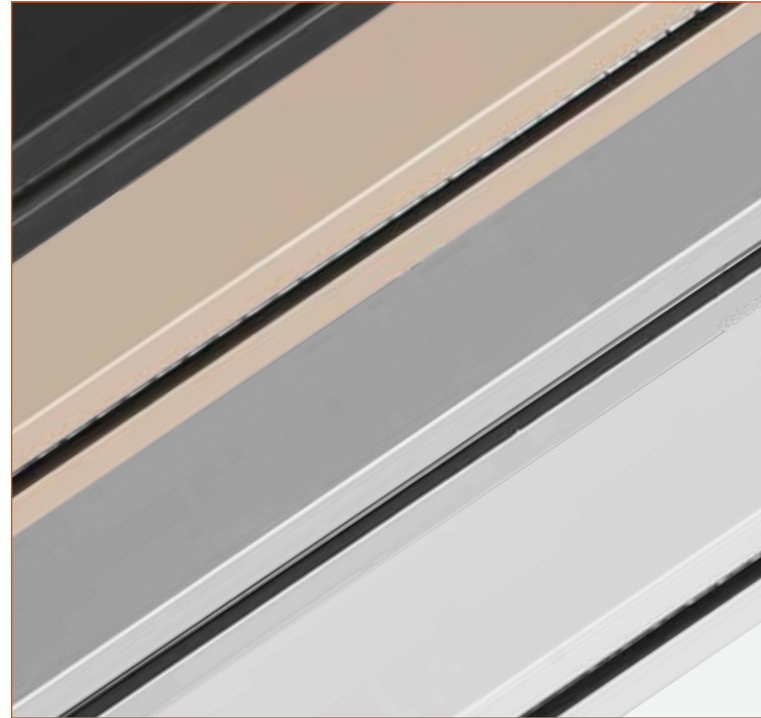
Sealed stainless steel ball bearing rollers make operating our doors effortless.



## Durable Hardware

For strength and durability, we use stainless-steel hardware.





## High-Performance Finishes

Choose from Warmtone, White, Bronze Anodized, or Satin Anodized. Warmtone and White are polyester hybrid painted finishes, meaning the finishing process for the organic coatings conforms to a minimum rating of AAMA-2604. Bronze Anodized and Satin Anodized finishes have a Class 1 rating, the highest and most durable rating for anodized aluminum products.



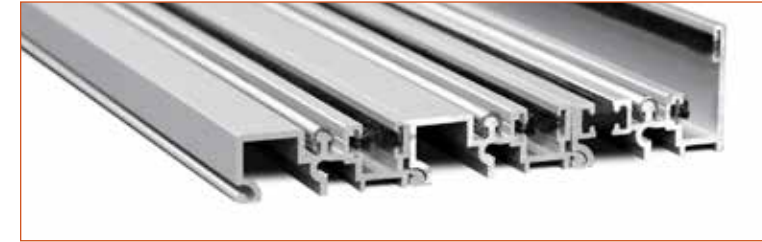
## Flush Handle

Our signature flush handle is the standard choice. It integrates into the panel for a clean aesthetic. Finish choices include brushed nickel or black.



## Premium Handle

The premium handle features a contemporary C-shape design with a comfortable grip. Finish options include brushed nickel or black.



## Water Barrier Sill

Designed for effectiveness in all climates, the water barrier sill's 1.5" interior leg safeguards against water intrusion. For additional protection, the back leg of each sliding panel extends into the sill.



## Flush Sill

When ease of entry is more important than performance, our flush sill is the perfect choice. With an interior and exterior sill height of 0.75", it can line up with most interior flooring for a smooth transition to the outside.

The flush sill is not warrantied against water penetration.



## Screening

Exclusively designed for our three- and four-panel multi-slide doors, the retractable screen collapses easily and stacks to the side of the door when not in use.

Providing optimal ventilation and flexibility, it expands to the full width of the opening using tensioning cords and precision bearings that provide stability, keep operating force low, and extend product life. Available on door sizes up to 20 feet wide. Screens are mounted on the interior of the door.





---

### Uninterrupted Indoor-Outdoor Living

Our Series 600 90-Degree Multi-Slide Door opens up the sides and corners of a room by eliminating a connecting post.

This innovative approach to expanding space includes the same high-performance features found in our standard multi-slide door, including thermally broken aluminum, a stile with a 2.5" interlock for additional rigidity and strength, and rolling panels that can be stacked at the opening or tucked neatly into pockets.

Retractable screen not available with this option.

---

**"We not only get to design plans that incorporate these impactful doors, but also the doors become a standard feature of the final floor plan."**

- Debra Falese, Woodley Architectural Group

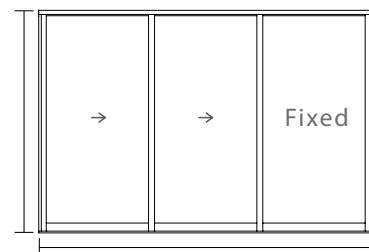


## Standard Sizes

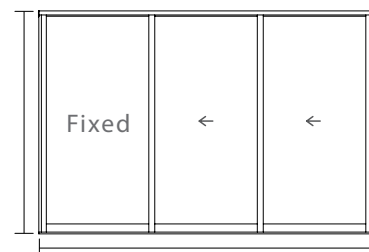
Standard size multi-slide door systems are available in 3-, 4-, and 5-foot panel configurations at a 95.5" frame height. Both stacking and pocket options are available. Select doors are also available in alternative heights of 79.5" and 107.5". All standard sizes and configurations include a standardized production lead time.

## Custom Sizes

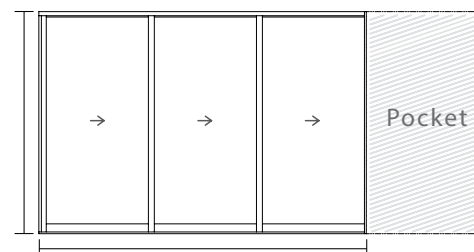
Customized sizes and configurations give production builders more design flexibility than ever to differentiate their homes outside of the standardized volume program. Let us know your specific size and configuration needs, then select color, handle, and track options.



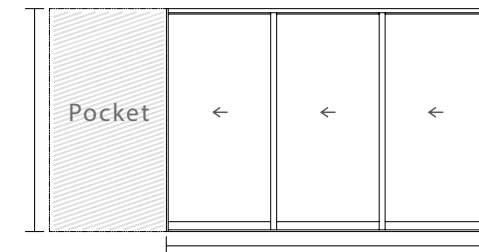
H = 95.50"  
W = 107.5", 143.50" or 179.50"  
**9080, 12080, 15080**



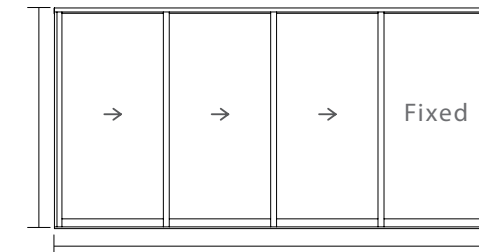
H = 95.50"  
W = 107.5", 143.50" or 179.50"  
**9080, 12080, 15080**



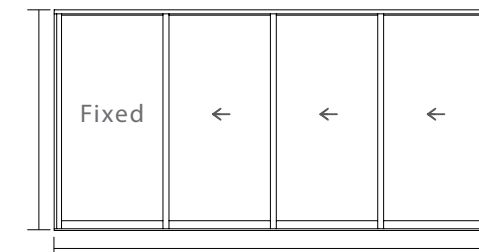
H = 95.50"  
W = 105", 141" or 177"  
**9080, 12080, 15080**



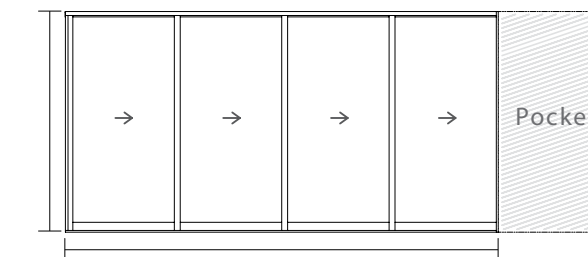
H = 95.50"  
W = 105", 141" or 177"  
**9080, 12080, 15080**



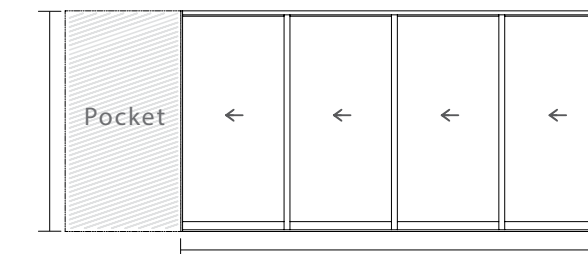
H = 95.50"  
W = 190" or 238"  
**16080, 20080**



H = 95.50"  
W = 190" or 238"  
**16080, 20080**



H = 95.50"  
W = 187.42" or 235.46"  
**16080, 20080**



H = 95.50"  
W = 187.42" or 235.46"  
**16080, 20080**





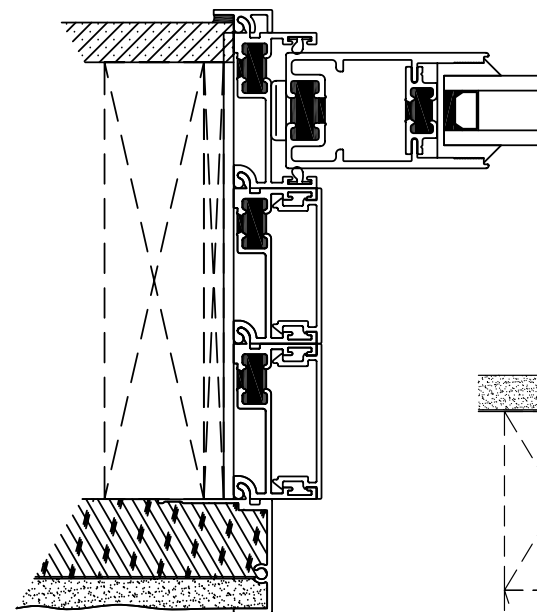
## Common Install Methods

The methods for installing our multi-slide door are designed to meet the needs of our Volume Program partners and may vary by market.

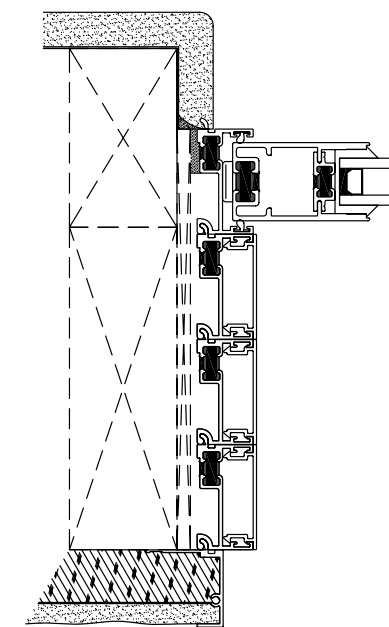
The most common approach consists of a deep stud wall that usually includes a 2x6 stud framing member with a 2x4 framing member furred on the interior. This creates a 9" wall profile where builders generally center our 6" track inside. Drywall is wrapped back to the door frame on the interior, and the stucco does the same on the exterior.

For builders who want to utilize our multi-slide door in a 2x6 wall, we've developed optional stucco return kits that include a proper return for both stucco and drywall. If a market has a different condition, we can design a custom return specifically for it.

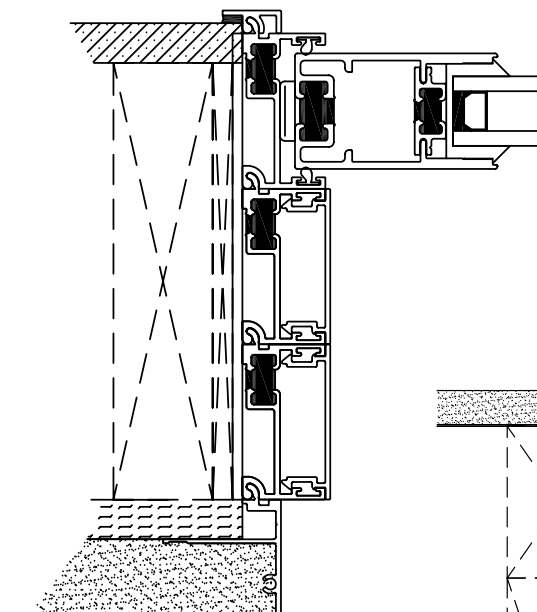
**"It's one of the best memory points we have in the models." - Kevin Rosinski, Toll Brothers**



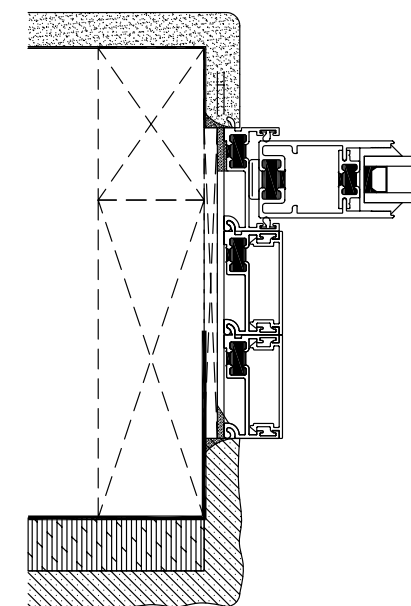
**2x6 Wall Install**  
1.375" Stucco Return



**Deep Wall Install**  
2x6 and 2x4 ▶ 1.375"  
Stucco Return



**2x6 Wall Install**  
1" Stucco Return  
with 1" Shear Wall



**Deep Wall Install**  
2x6 and 2x4





Toll Brothers • Turquesa • AZ

---

## Enjoy More Discounts

When you choose door systems from the Volume Program for your next model home, you're eligible for additional discounts.

If the door is featured as an option, we offer one set of discounting. If it comes standard with a home, the savings are greater. The more model homes, the more substantial the discount. It's that simple.

Western Window Systems will even send our sales representatives to the job site to support and train your team. We'll help them understand how our doors are manufactured and installed as well as provide product information and details. In addition, we'll supply you with brochures to give to potential homebuyers.

---

**"There are so many options to choose from, all the way down to the track systems and styles."** - Lexi Hager, Century Communities





## excellence

Best Metal Window Brand  
*Builder and Developer Magazine*



## innovation

Product of the Year  
*USGlass Magazine*



## partnership

Best in Customer Satisfaction  
*Houzz.com*

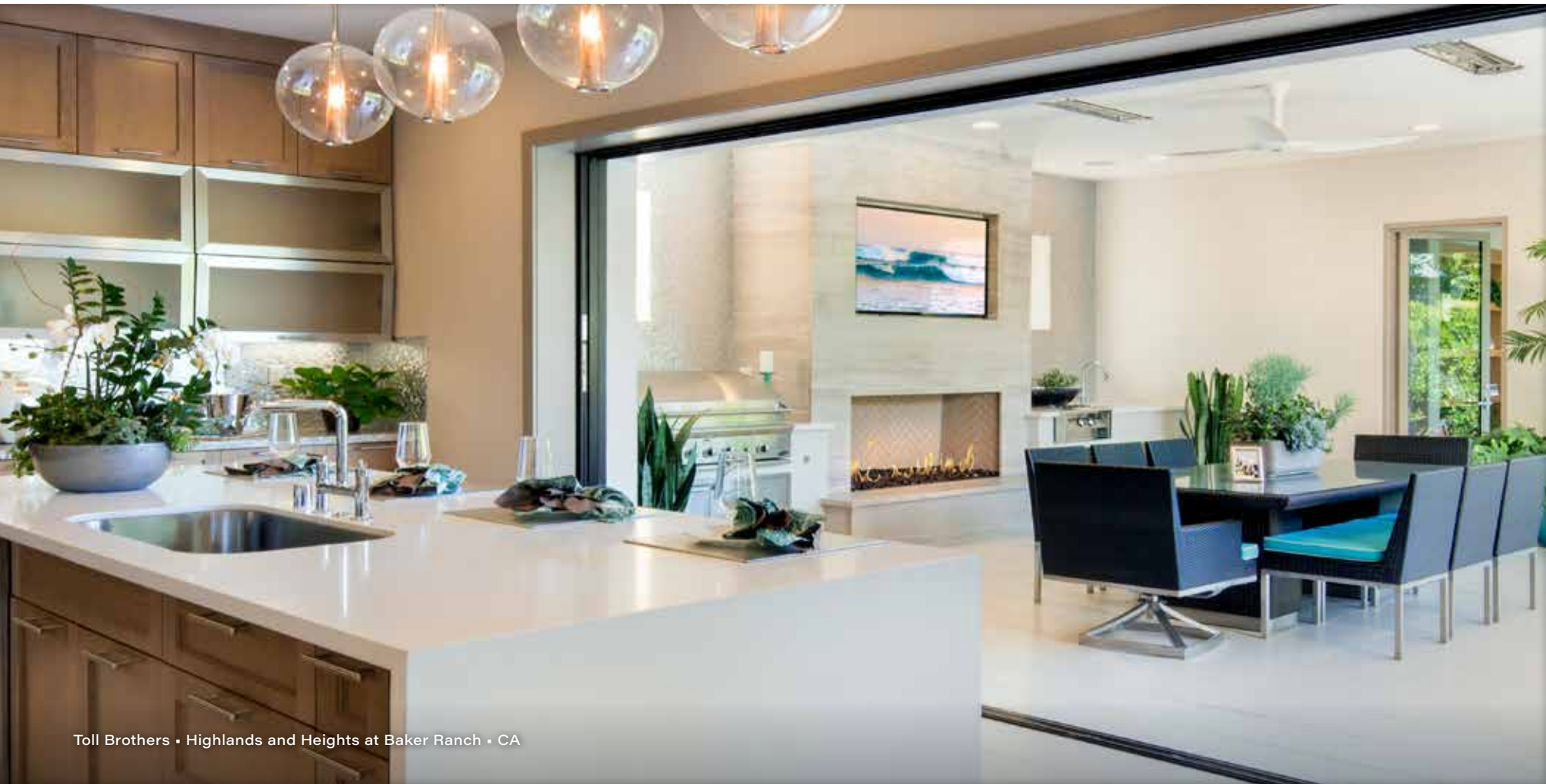
### **A Leader in Quality, Innovation, and Service**

Our legacy of quality manufacturing is based on three core beliefs: excellence, innovation, and partnership. Everything we create and cultivate – our products, relationships, and corporate culture – is founded on these three values.

As a result of our longtime commitment to these values, we're grateful to have received several accolades from the building and remodeling industry, including Best Metal Window Brand from *Builder and Developer* magazine; Product of the Year from *USGlass* magazine; and Best in Customer Satisfaction from Houzz.com.

# Build Better





Toll Brothers • Highlands and Heights at Baker Ranch • CA

210723



Western Window Systems  
877-268-1300  
2200 E. Riverview Dr., Phoenix, AZ 85034  
[westernvolumeprogram.com](http://westernvolumeprogram.com)