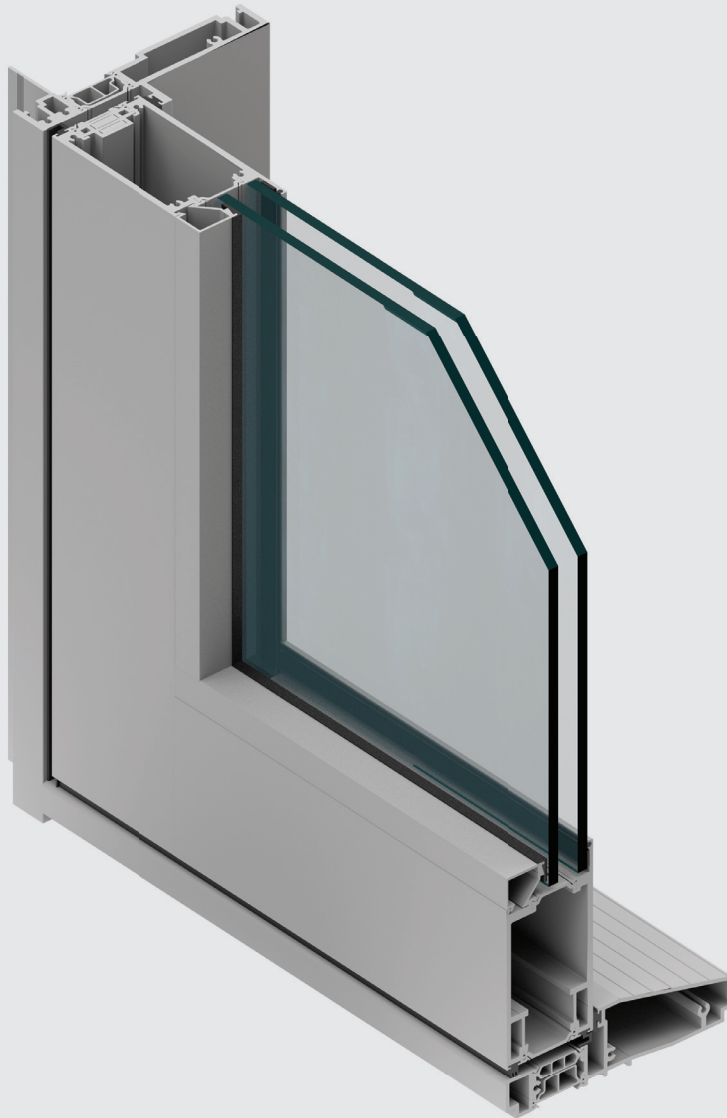


Series 7900 Hinged Door (Out-swing)



Build Better

PERFORMANCE LINE: Our Series 7000 family of moving glass walls and windows addresses energy and structural requirements while promoting contemporary design.

Series 7900 Hinged Door (Out-swing)

The Series 7900 Hinged Door features a wide glass panel that maximizes views and lets in natural light, as well as creating an impressive main entrance or clear interior passage, and it also can connect the indoors with the outside via a patio, deck, or balcony. The door is available in single or double out-swing configurations and can be partnered with any of our window styles. Standard jambs are available for panel sizes up to 4' x 10'. Heavy-duty jambs are required for larger sizes (up to 5' x 12').

ENERGY EFFICIENCY

A .32 U-value for standard low-E, argon-filled dual-pane glass or a .21 U-value for high-performance triple-pane glass gives the door excellent energy efficiency and is tested for air, water, and structural performance and is certified by the NFRC and AAMA. Glass can be customized in a variety of coatings, tints, and thicknesses for improved privacy, protection, and thermal efficiency. Our signature aluminum extrusion design further reduces energy consumption. The Series 7900 features Energy Star-qualified options and complies with California's rigorous Title 24 requirements.

HARDWARE

On doors over eight feet tall, stainless steel roller catches are utilized to the pull the door tight.

OPTIONS

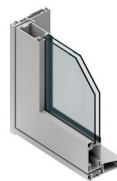
The standard threshold is 5.875" wide and features a 1" exterior step that protects against water penetration. The commercial threshold favors ease of entry over protection from the elements and is capable of meeting ADA requirements. Our premium handle features a minimal one-piece design. Lock options include the Type C lock (standard deadbolt), three-point, five-point, or six-point lock.

FINISHES AND COLORS

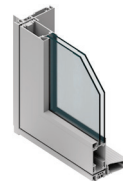
Finishes are available in-stock or as designer selections, and they can be customized to match nearly any color. Split finishes are available in many combinations. Bronze Anodized and Satin Anodized come standard with a Class 1 coating thickness for increased smoothness and durability. Our designer colors include a high-quality paint finish that conforms to a minimum rating of AAMA-2605, currently the highest rating for organic finishes.

PERFORMANCE

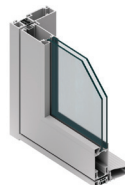
Frame Depth	5 7/8"
AAMA Product Designation (AAMA/WDMA/CSA101/I.S.2/A440 Designation)	CW-PG50-48x120-SHD
Test Configuration	48" x 120" X Swing-Out
Air Infiltration (Per ASTM E 283)	.00 cfm/sf @1.57 psf
CSA A440 Air	A3
Water Resistance (Per ASTM E 547)	7.5 psf
Uniform Load Deflection (Per ASTM E 330)	50 psf
Uniform Load Structural (Per ASTM E 330)	75 psf
Forced Entry Resistance	AAMA 1304-02
U-Factor (Per NFRC 100)*	0.32
CR (Per NFRC 500)*	64
CRF Frame (Per AAMA 1503)	70
Actual values may vary depending on product specifications and configuration. *Glass Makeup = 1" OA E366/Argon/Clear	



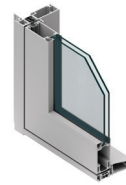
Series 7900 Hinged Right - Swing Out Door
Standard Jamb - Equal Leg Frame



Series 7900 Hinged Right - Swing Out Door
Standard Jamb - Nail-Fin Frame



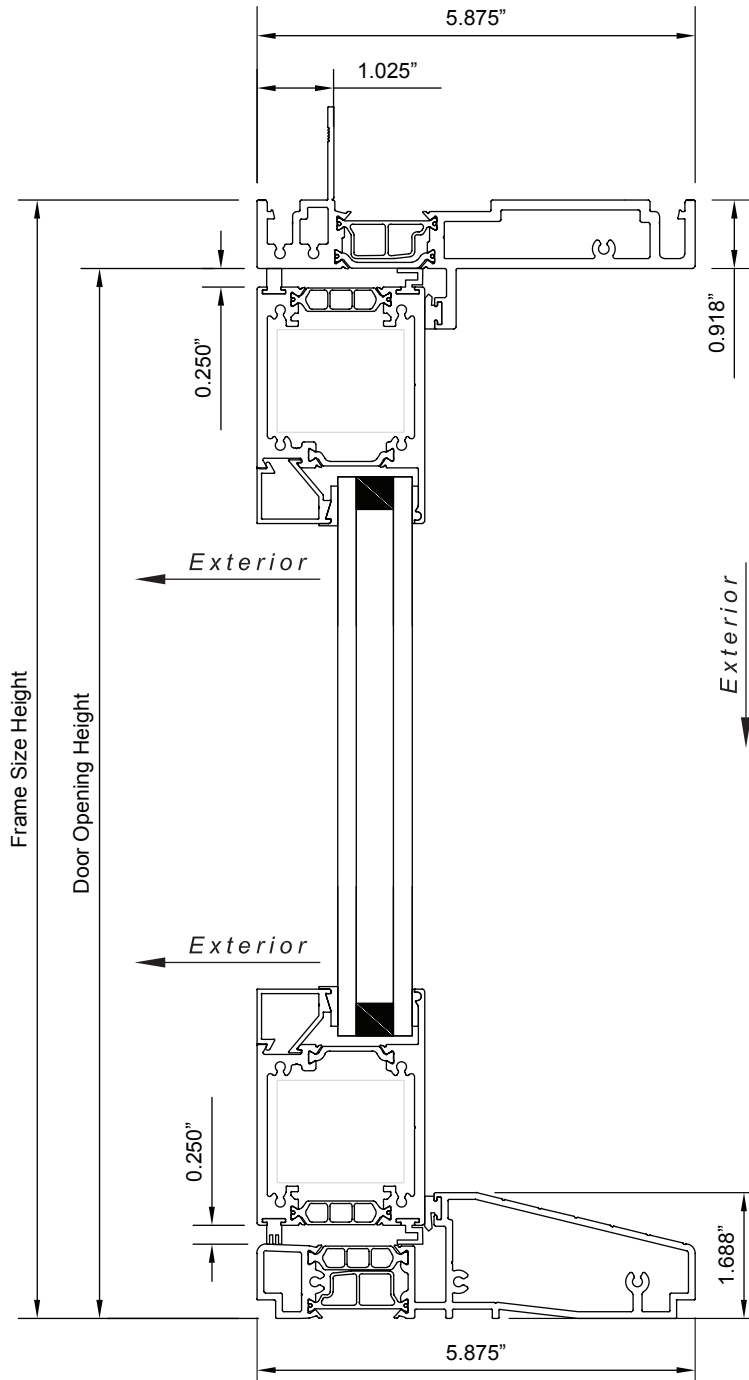
Series 7900 Hinged Right - Swing Out Door
Heavy-Duty Jamb - Equal Leg Frame



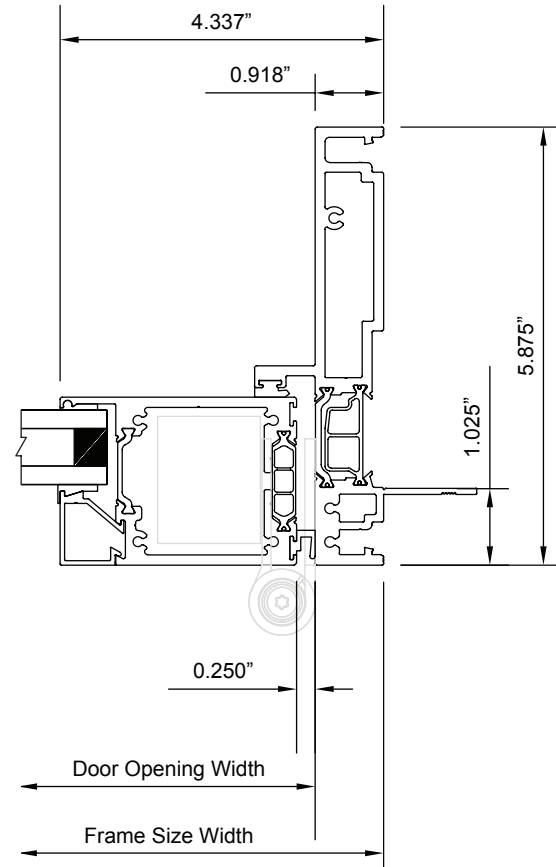
Series 7900 Hinged Right - Swing Out Door
Heavy-Duty Jamb - Nail-Fin Frame

Series 7900 Hinged Door (Out-swing)

narrow stile - swing-out
standard head - nail-fin frame



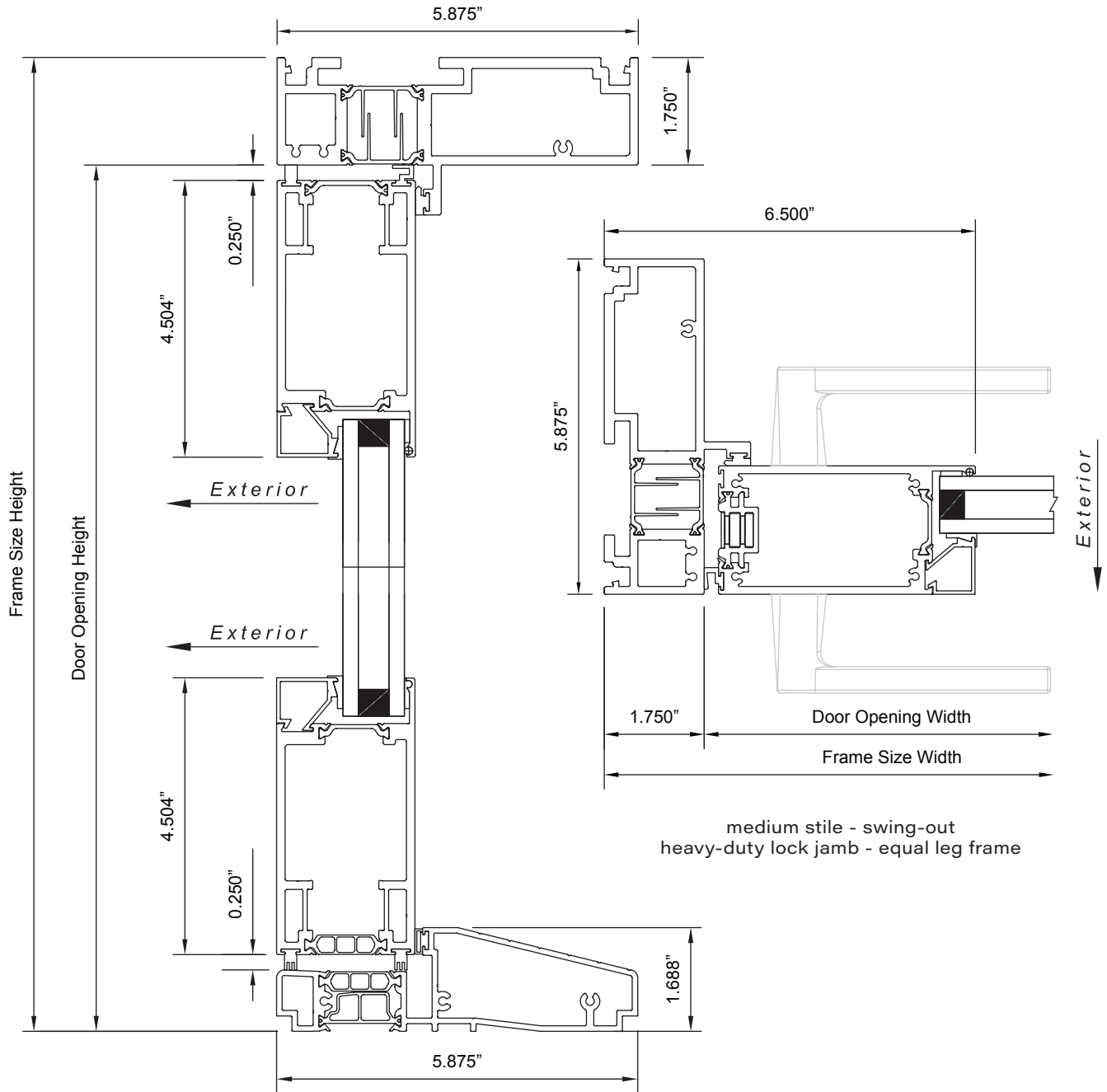
narrow stile - swing-out
standard threshold



narrow stile - swing-out
standard hinge jamb - nail-fin frame

Series 7900 Hinged Door (Out-swing)

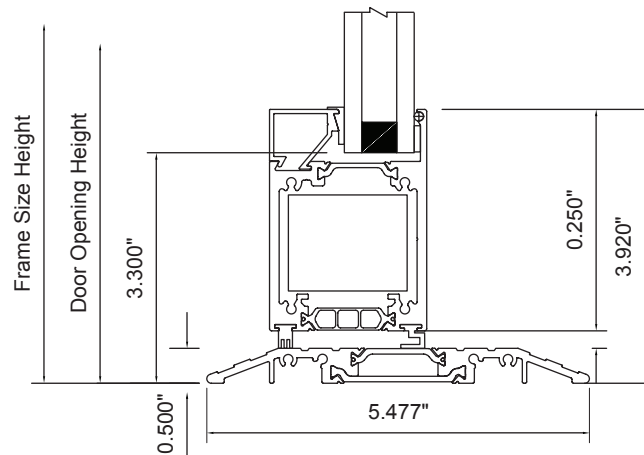
medium stile - swing-out
heavy-duty head - equal leg frame



medium stile - swing-out
heavy-duty lock jamb - equal leg frame

medium stile - swing-out
standard threshold

Series 7900 Hinged Door (Out-swing)



swing-out
commercial threshold