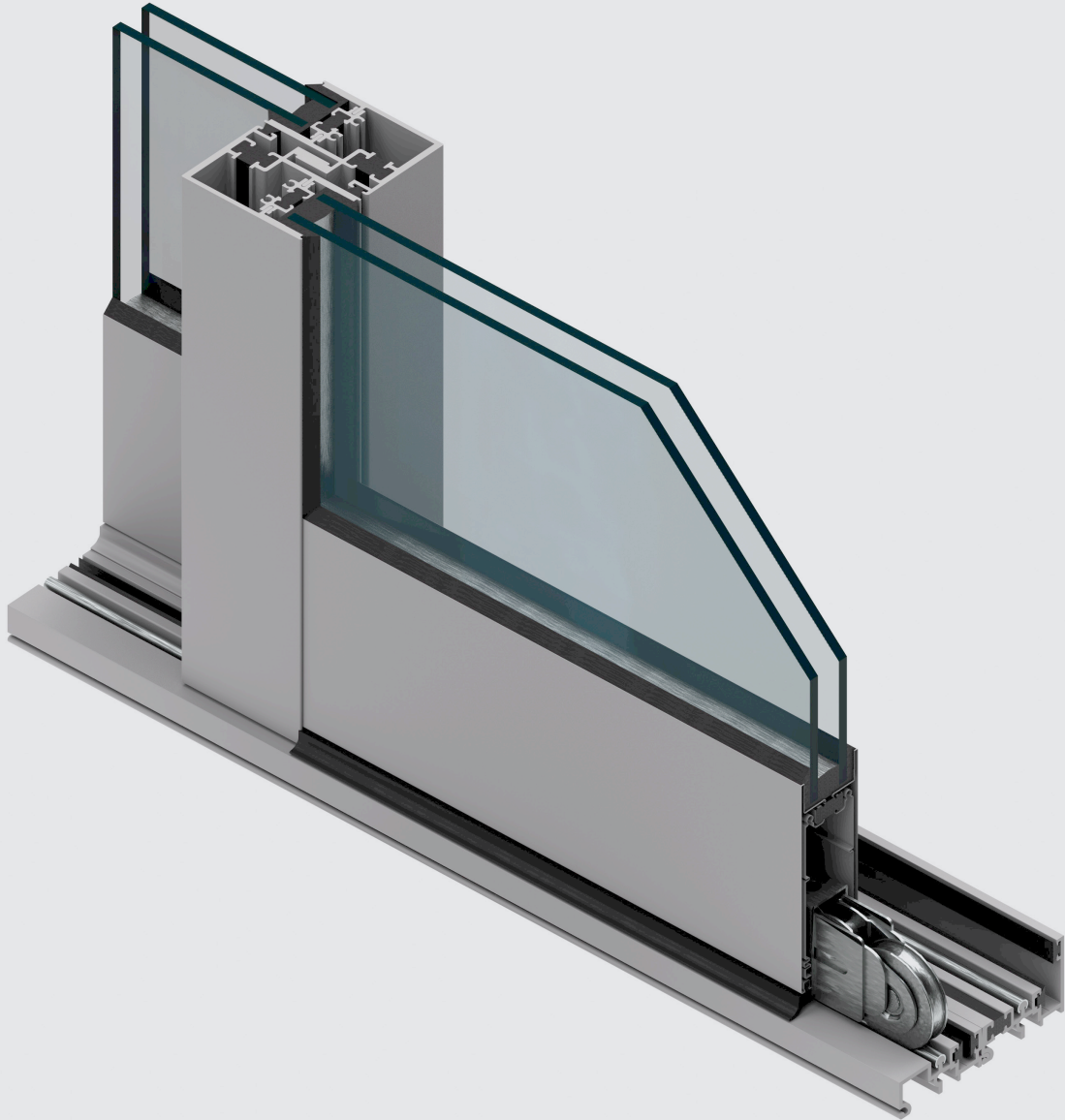


Series 600 Multi-Slide Door



Build Better

CLASSIC LINE: High-quality moving glass walls and windows that combine exceptional performance with clean design.

Series 600 Multi-Slide Door

The Series 600 Multi-Slide Door features large, unobstructed rolling glass panels that stack or slide into pockets to create extra-wide openings for indoor-outdoor commercial and living spaces. It is available with panels up to 12 feet tall (or a maximum of 60 square feet). And even with extreme panel sizes, it is easy to operate, thanks to sealed stainless steel ball bearing rollers. The aluminum frame's clean lines, narrow profile, and high-quality anodized or painted finishes deliver a contemporary aesthetic that seamlessly blends into nearly any space.

ENERGY EFFICIENCY

A .36 U-value for standard low-E, argon-filled dual-pane glass from Cardinal IG gives the door premium energy efficiency. It is compliant with California's rigorous Title 24 requirements and can be customized in a variety of panel counts, configurations, and wall depths. The aluminum frame and panels are thermally broken to reduce heat and cold transfer. NFRC labeling is included to comply with energy code requirements.

HARDWARE

The frame's rollers are AAMA-certified and include a standard 1.81" size. Our optional 3" Monster Roller is capable of handling more than twice the weight of the largest panel. A hidden stainless steel multi-point lock secures the sliding panels.

OPTIONS

Sill options include a water-barrier sill, featuring a 1.5" interior leg and weep system to keep out water; a flush sill, which is best when ease of entry is more important than keeping out the elements; and the Thinline sill, which is ideal in situations where the continuation of flooring from the inside to the outside appears seamless. Handle options include a flush-mounted handle, which allows panels to slide past each other and stack flush or into a pocket. The premium handle features a minimal one-piece design and comfortable grip. Both handles have an optional keyed cylinder.

FINISHES AND COLORS

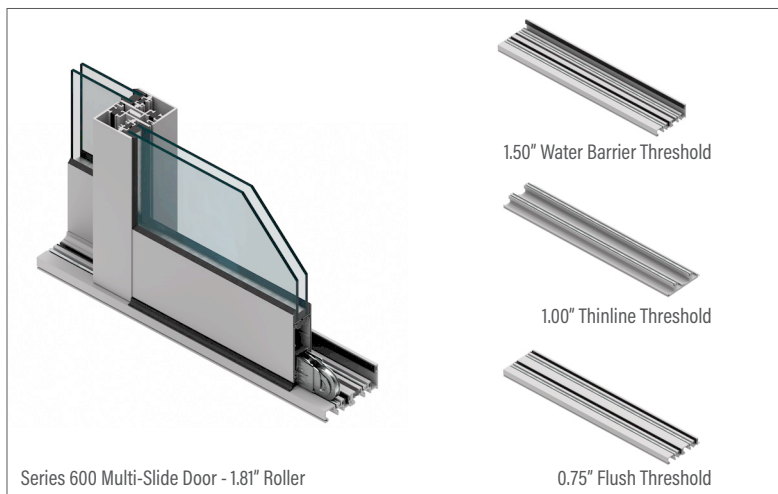
Finishes are available in-stock or as designer selections, and they can be customized to match nearly any color. Bronze Anodized and Satin Anodized come standard with a Class 1 coating thickness for increased smoothness and durability. Our designer colors include a high-quality paint finish that conforms to a minimum rating of AAMA-2605, currently the highest rating for organic finishes.

PERFORMANCE

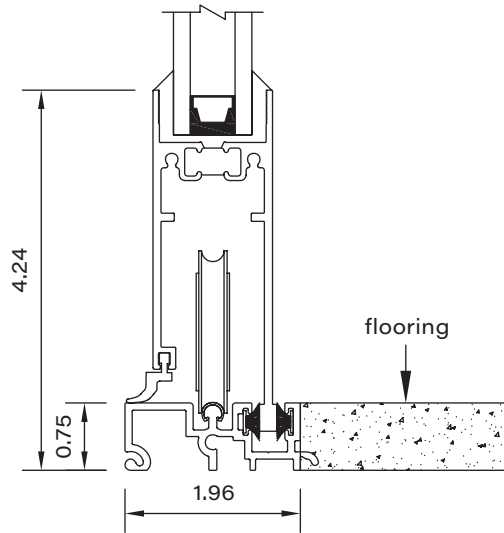
Frame Depth	1.98" Per Track
AAMA Product Designation (AAMA/WDMA/CSA101/I.S.2/A440 Designation)	LC-PG25-120x96-SD
Test Configuration	120" x 96" P2X
Air Infiltration (Per ASTM E 283)	.30 cfm/sf @1.57 psf
CSA A440 Air	N/A
Water Resistance (Per ASTM E 547)	3.75 psf
Uniform Load Deflection (Per ASTM E 330)	25 psf
Uniform Load Structural (Per ASTM E 330)	37.5 psf
Forced Entry Resistance	ASTM F842 Type A Grade 10 CAWM 300 Type I
U-Factor (Per NFRC 100)*	0.36
CR (Per NFRC 500)*	43
CRF Frame (Per AAMA 1503)	32

Actual values may vary depending on product specifications and configuration.

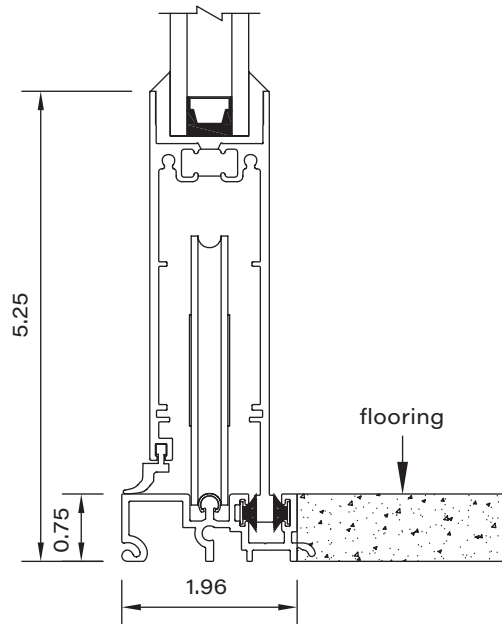
*Glass Makeup = 1" OA E366/Argon/Clear



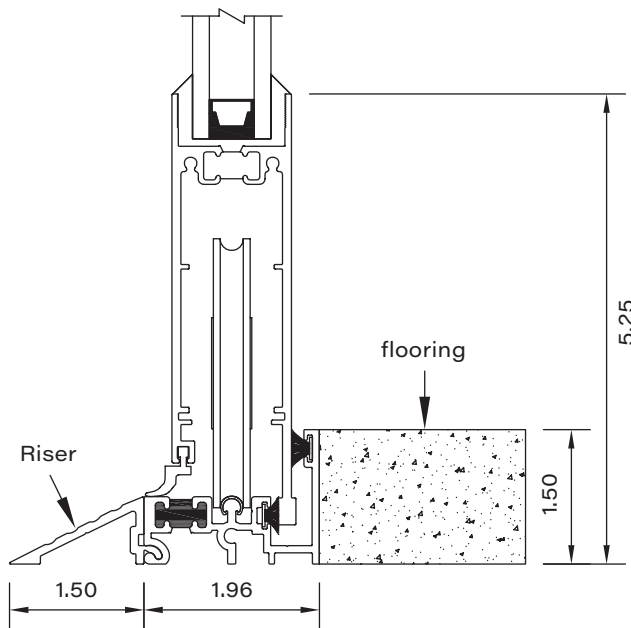
Series 600 Multi-Slide Door



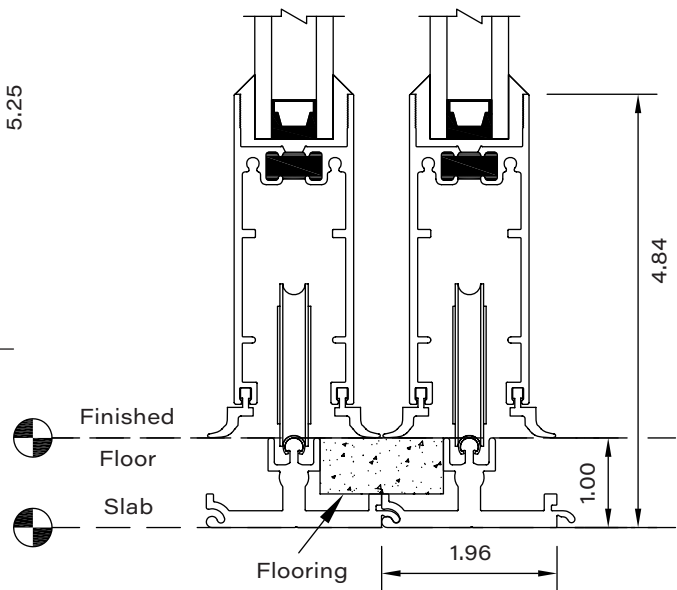
flush threshold with
1.81 diameter roller



flush threshold with
3.00" diameter roller

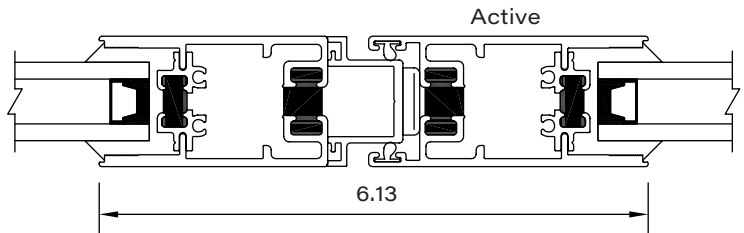


water barrier threshold with
3.00" diameter roller and riser

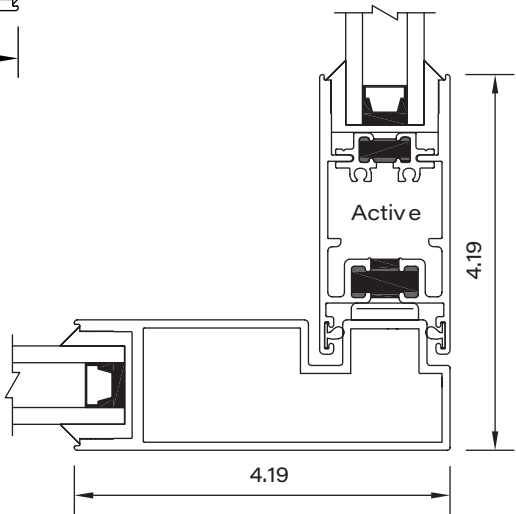


thinline threshold with
1.81" diameter roller

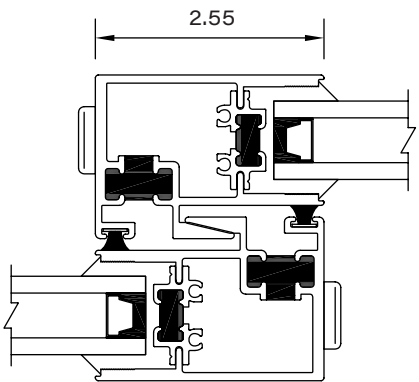
Series 600 Multi-Slide Door



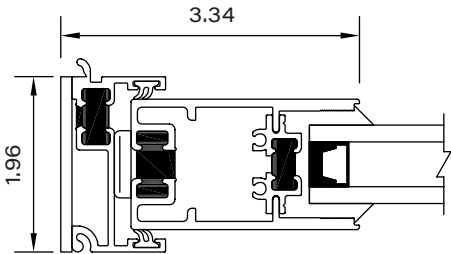
bi-parting condition



90-degree condition

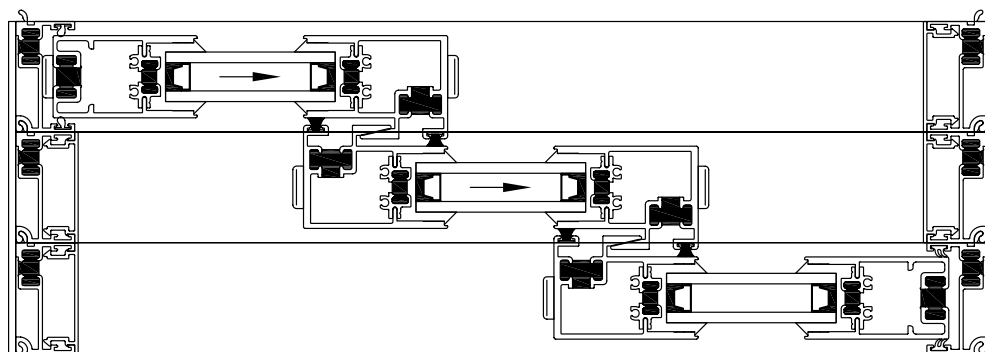
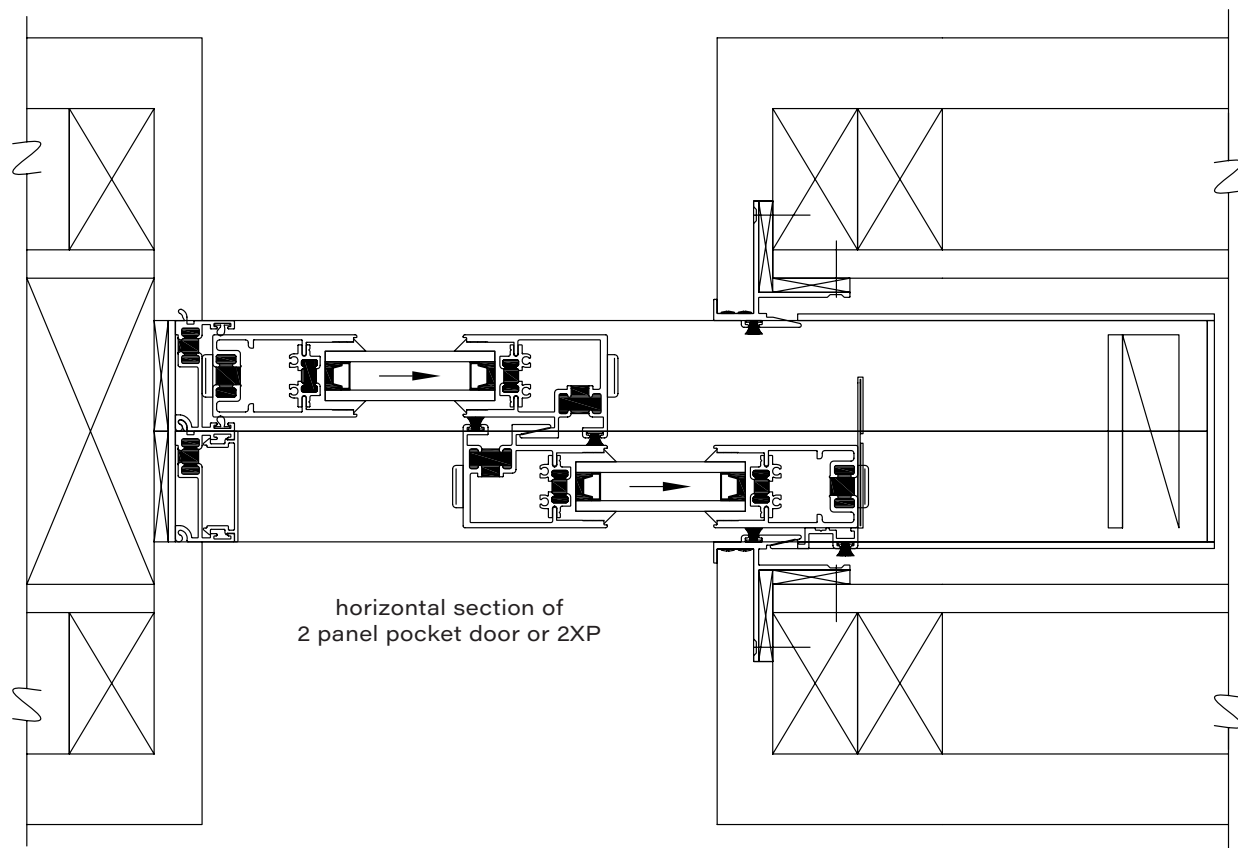


interlocking condition

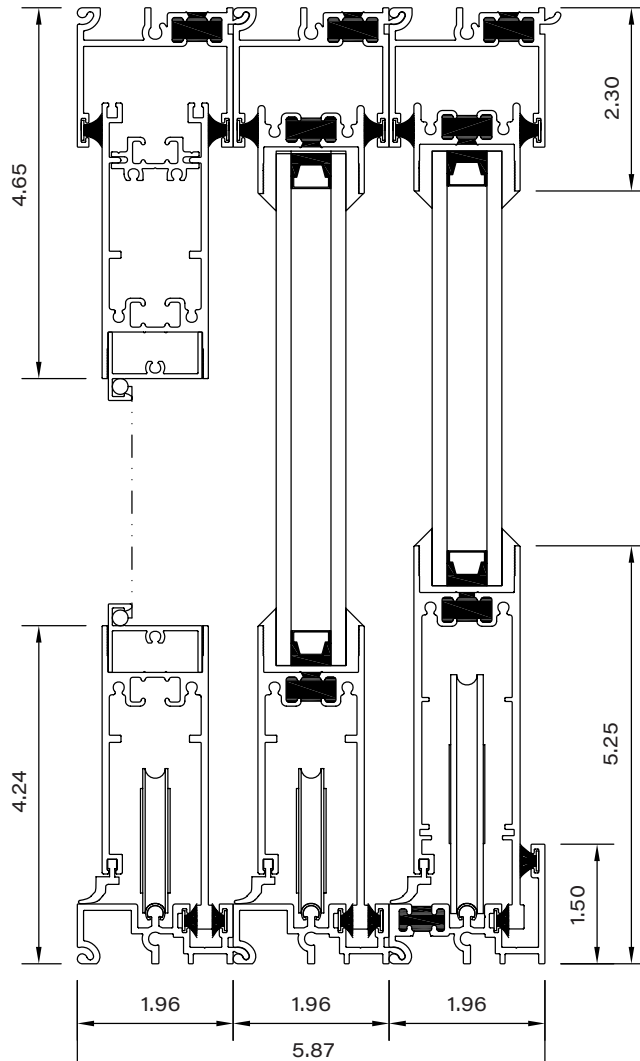


fixed position

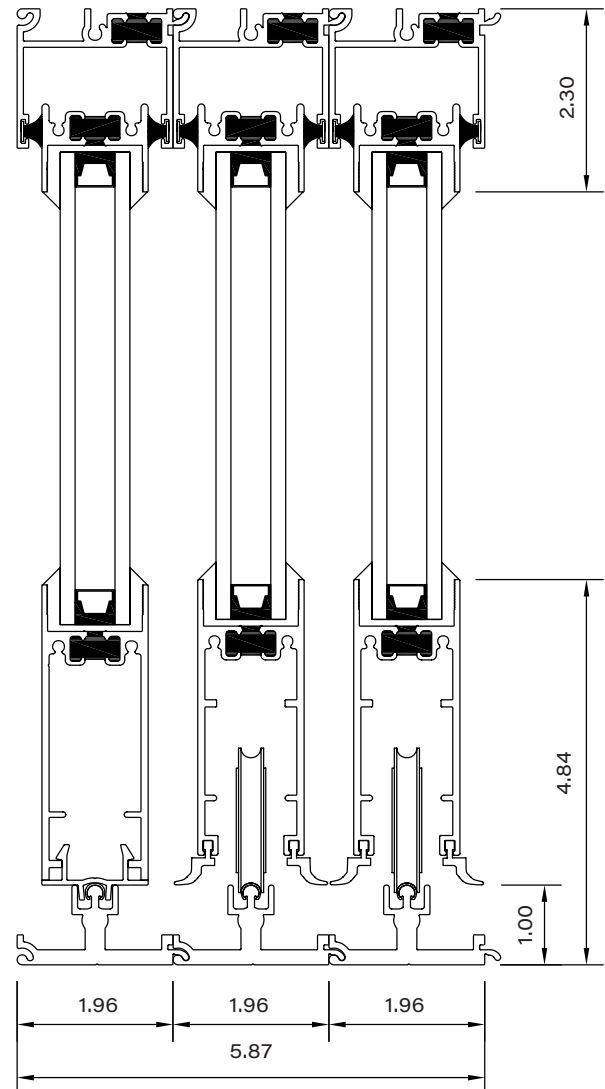
Series 600 Multi-Slide Door



Series 600 Multi-Slide Door

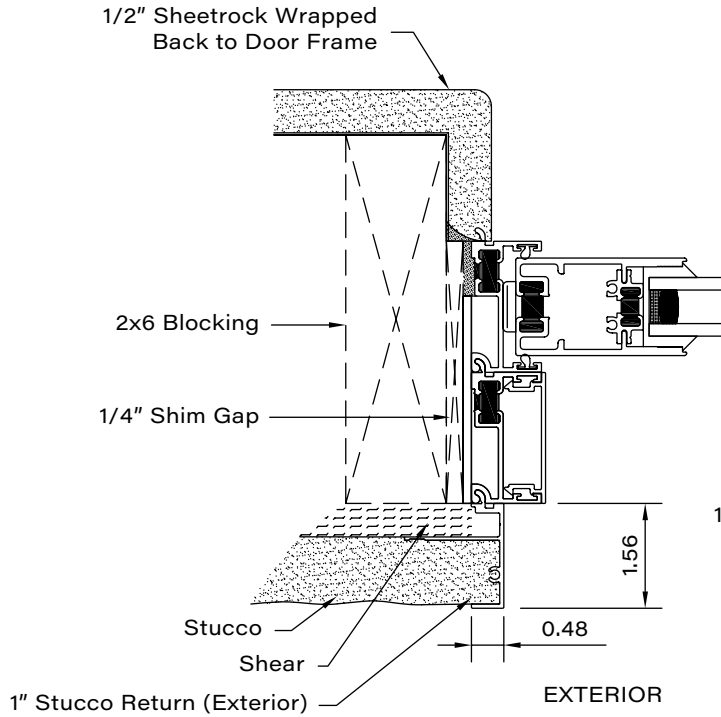


vertical section of exterior screen
1.81" diameter roller
3.00" diameter roller
water barrier threshold

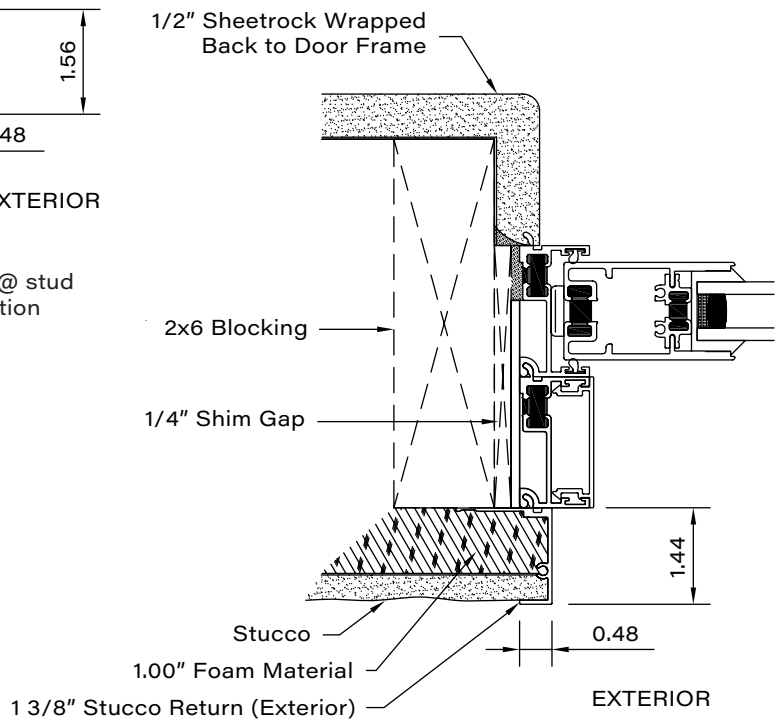


vertical section of thinline threshold
with 1.81" diameter rollers

Series 600 Multi-Slide Door

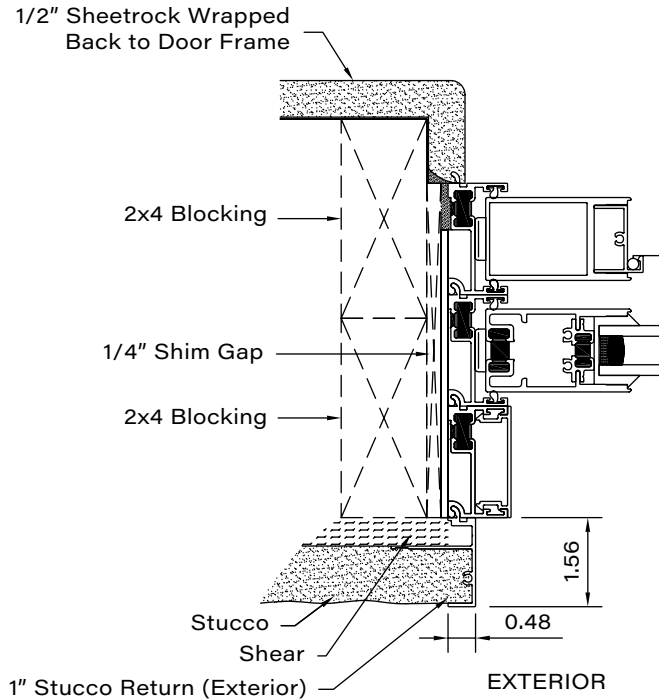


1" stucco return wall construction profile @ stud multi-slide stacking door jamb application

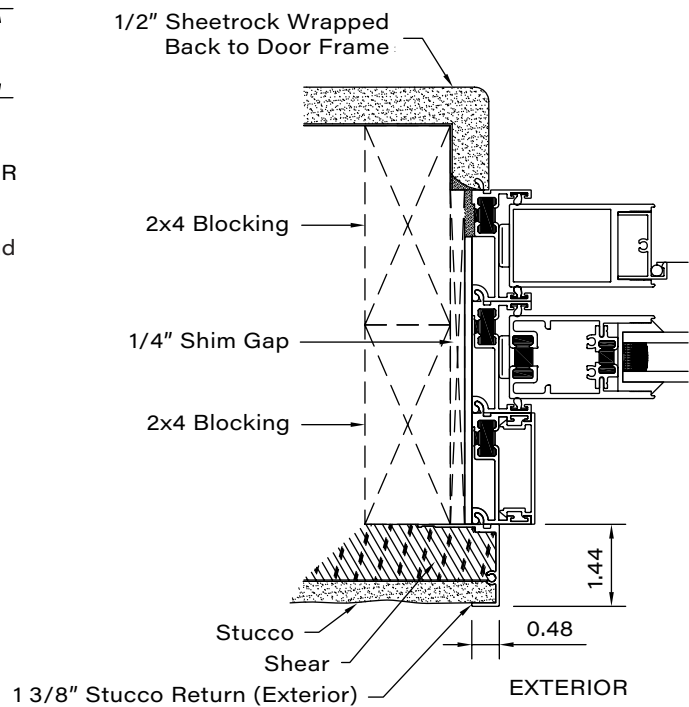


1.375" stucco return wall construction profile @ stud multi-slide stacking door jamb application

Series 600 Multi-Slide Door



1" stucco return wall construction profile @ stud multi-slide stacking door jamb application



1.375" stucco return wall construction profile @ stud multi-slide stacking door jamb application