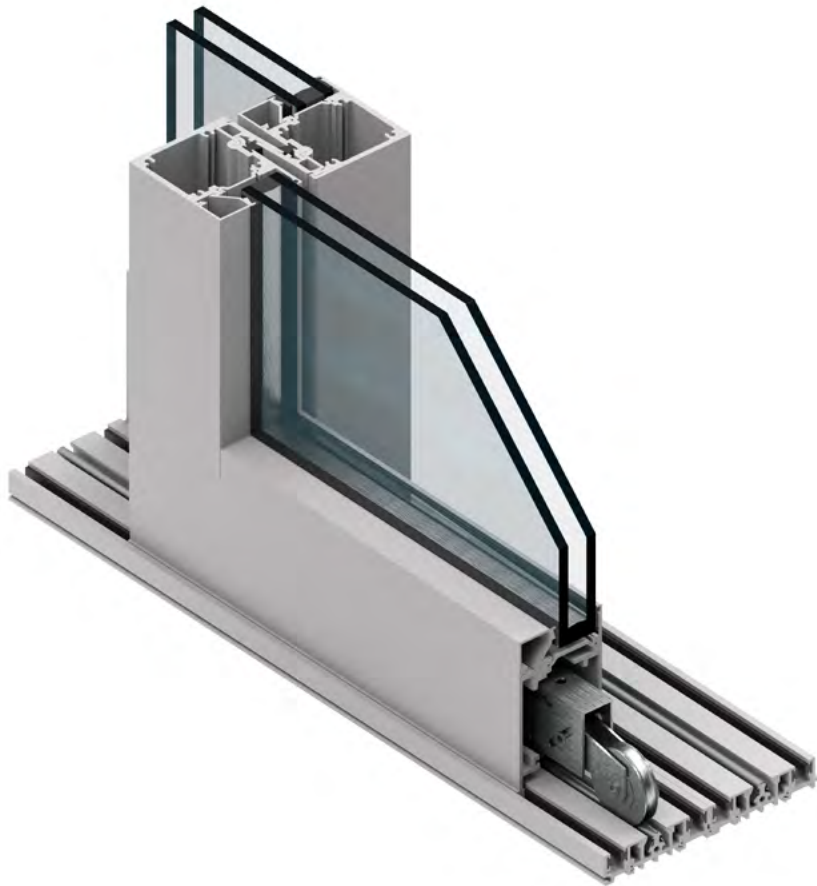


PERFORMANCE SERIES 7600 MULTI-SLIDE DOOR



The Series 7600 Multi-Slide Door features large, unobstructed rolling glass panels that stack or slide into pockets to create extrawide openings for indoor-outdoor living spaces and commercial applications. And even with extreme panel sizes, it is easy to operate, thanks to sealed stainless steel ball bearing rollers. The aluminum frame's clean lines, narrow profile, and high-quality anodized or painted finishes deliver a contemporary aesthetic that seamlessly blends into nearly any space.

Energy Efficiency

A .31 U-factor for standard low-E, argon-filled dual-pane glass from Cardinal IG gives the door premium energy efficiency.

Hardware

Our AAMA-certified, sealed stainless steel ball bearing rollers come in a standard 1.81" size, with optional Quad-Zilla rollers for larger, heavier panels.

Lock

A concealed stainless steel multi-point lock ensures panel security.

Finishes

Bronze Anodized and Satin Anodized come standard with a Class 1 coating thickness for increased smoothness and durability. Our designer colors include a high-quality paint finish that conforms to a minimum rating of AAMA-2605, currently the highest rating for organic finishes.

Performance Table

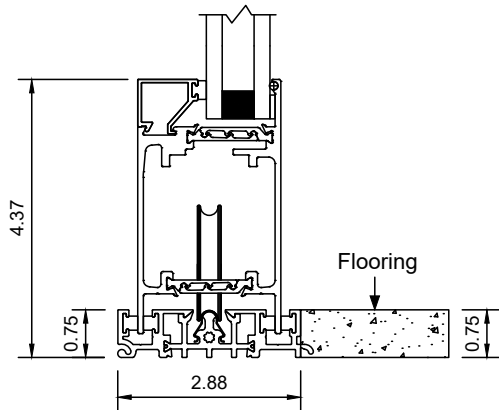
Frame Depth	2.87" Per Track
AAMA Product Designation (AAMA/WDMA/CSA101/I.S.2/A440 Designation)	LC-PG50-144x120-SD
Test Configuration	144" x 120" XXO
Air Infiltration (Per ASTM E 283)	24 cfm/sf @1.57 psf
CSA A440 Air	A2
Water Resistance (Per ASTM E 547)	8.0 psf
Uniform Load Deflection (Per ASTM E 330)	50 psf
Uniform Load Structural (Per ASTM E 330)	75 psf
Forced Entry Resistance	ASTM F842 Type B Grade 10
U-Factor (Per NFRC 100)*	0.31
CR (Per NFRC 500)*	59

*Actual values may vary depending on product specifications and configuration.
* Glass Makeup = 1" OA E366/Argon/Clear*

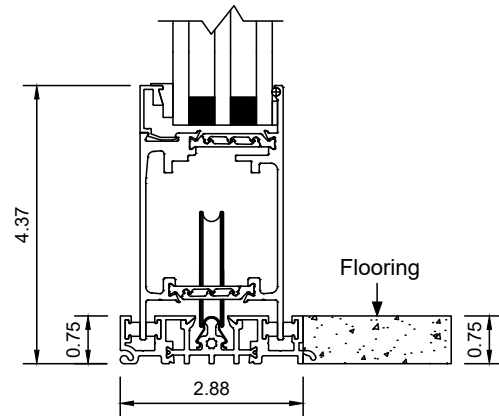
PERFORMANCE SERIES 7600 MULTI-SLIDE DOOR



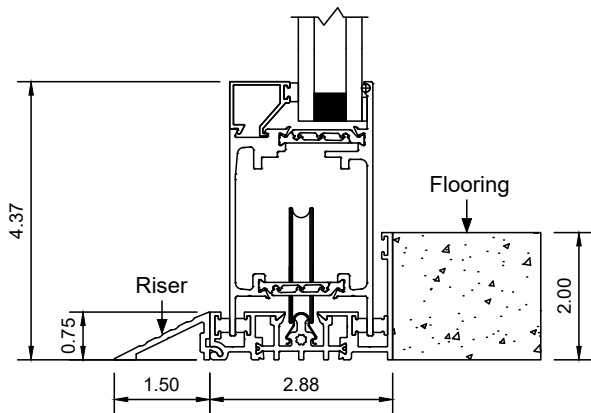
For more CAD
details scan here



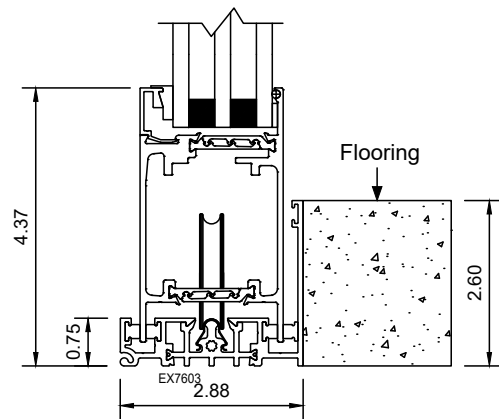
flush threshold with tandem,
Quad-Zilla, and dual-pane glass



flush threshold with tandem,
Quad-Zilla, and triple-pane glass



2" threshold with tandem and
Quad-Zilla

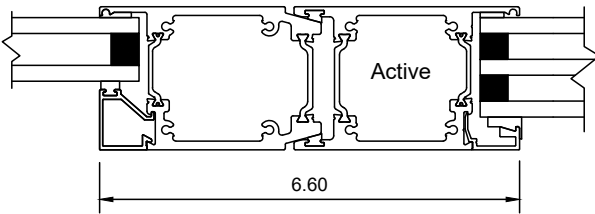


high-performance 2.6" threshold with
tandem and Quad-Zilla

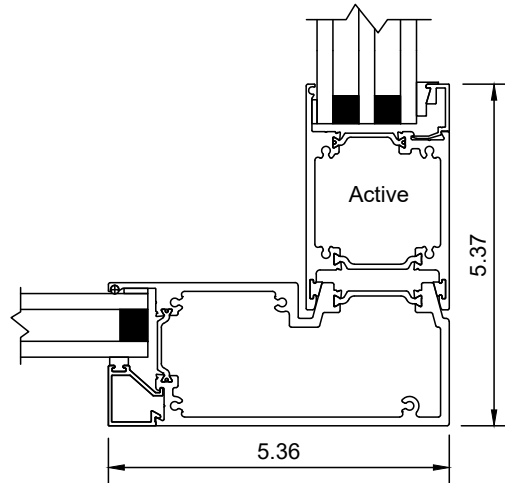
PERFORMANCE SERIES 7600 MULTI-SLIDE DOOR



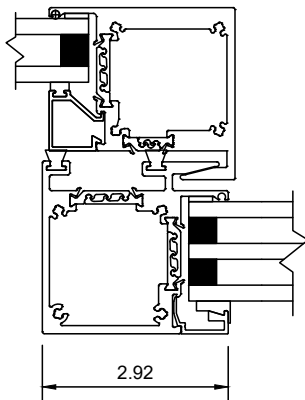
For more CAD
details scan here



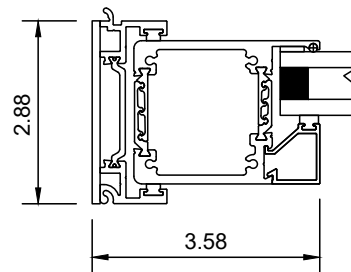
bi-parting condition



90-degree condition



interlocking condition

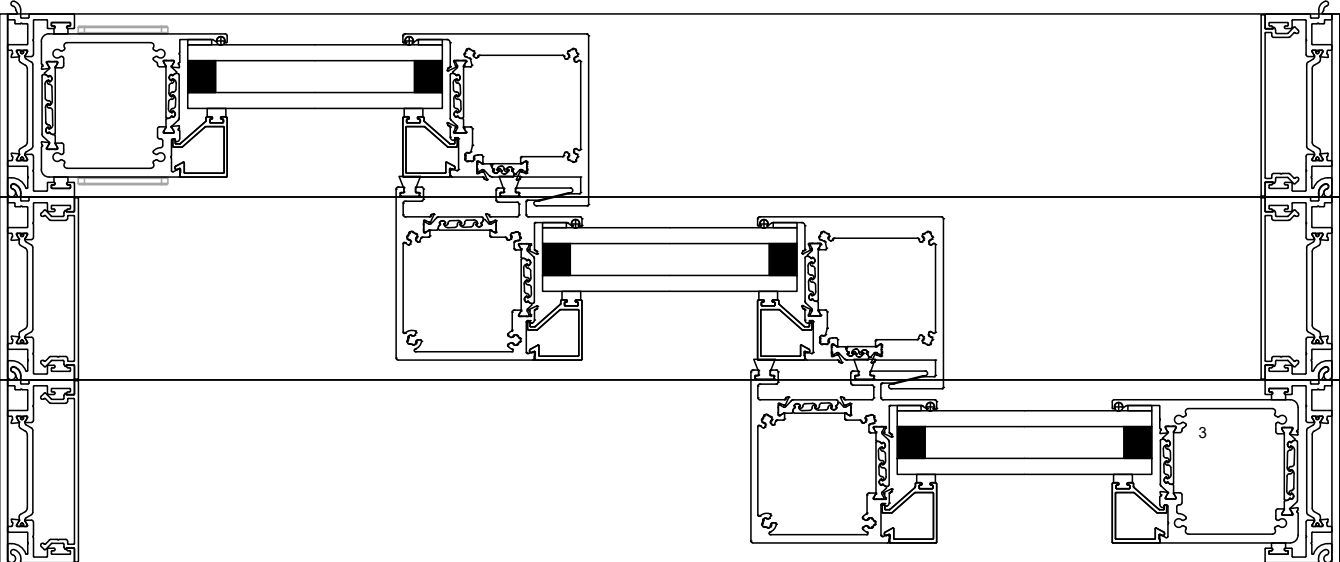


fixed position

PERFORMANCE SERIES 7600 MULTI-SLIDE DOOR



For more CAD
details scan here

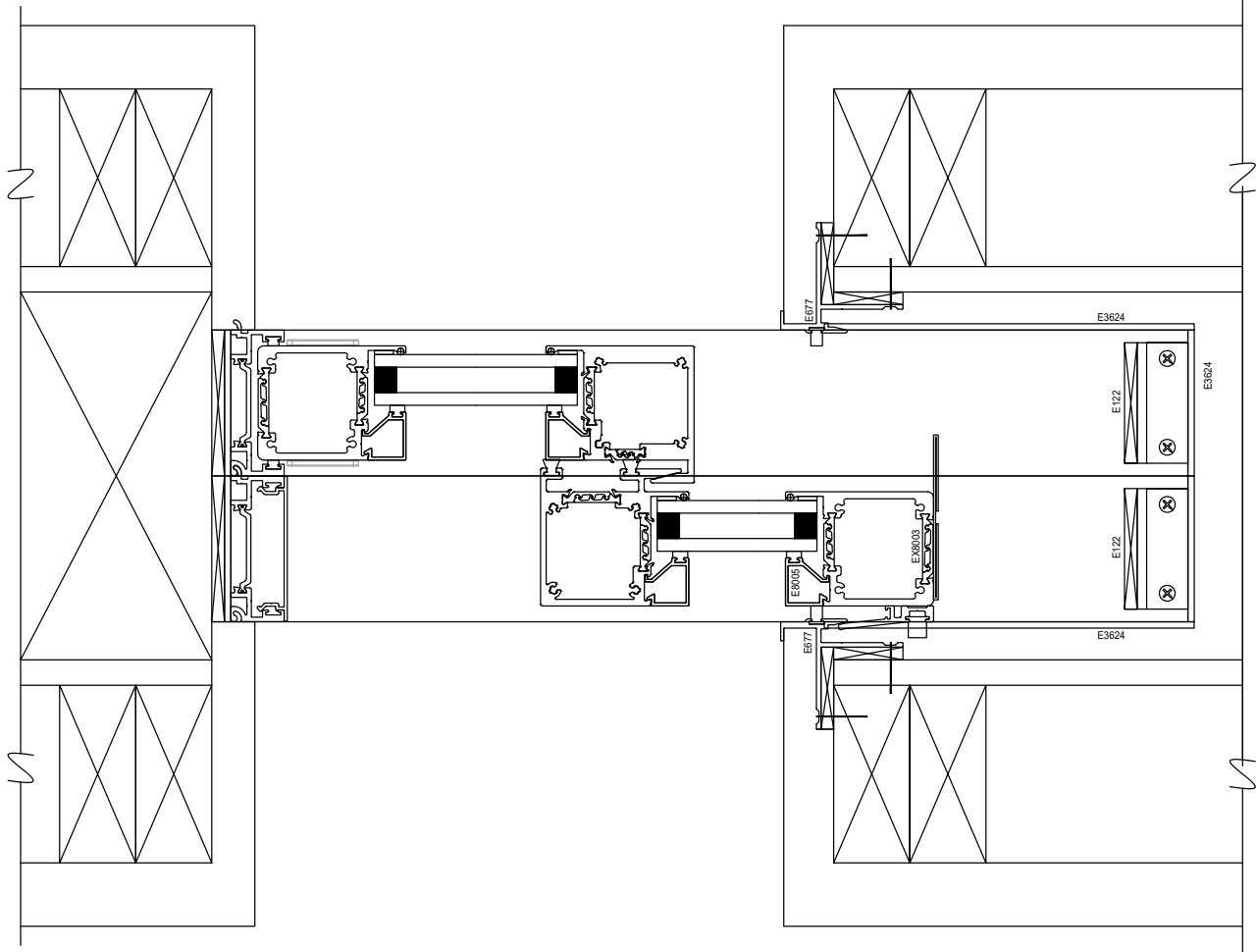


horizontal section of
3-panel stacking door or 2XO

PERFORMANCE SERIES 7600 MULTI-SLIDE DOOR



For more CAD
details scan here

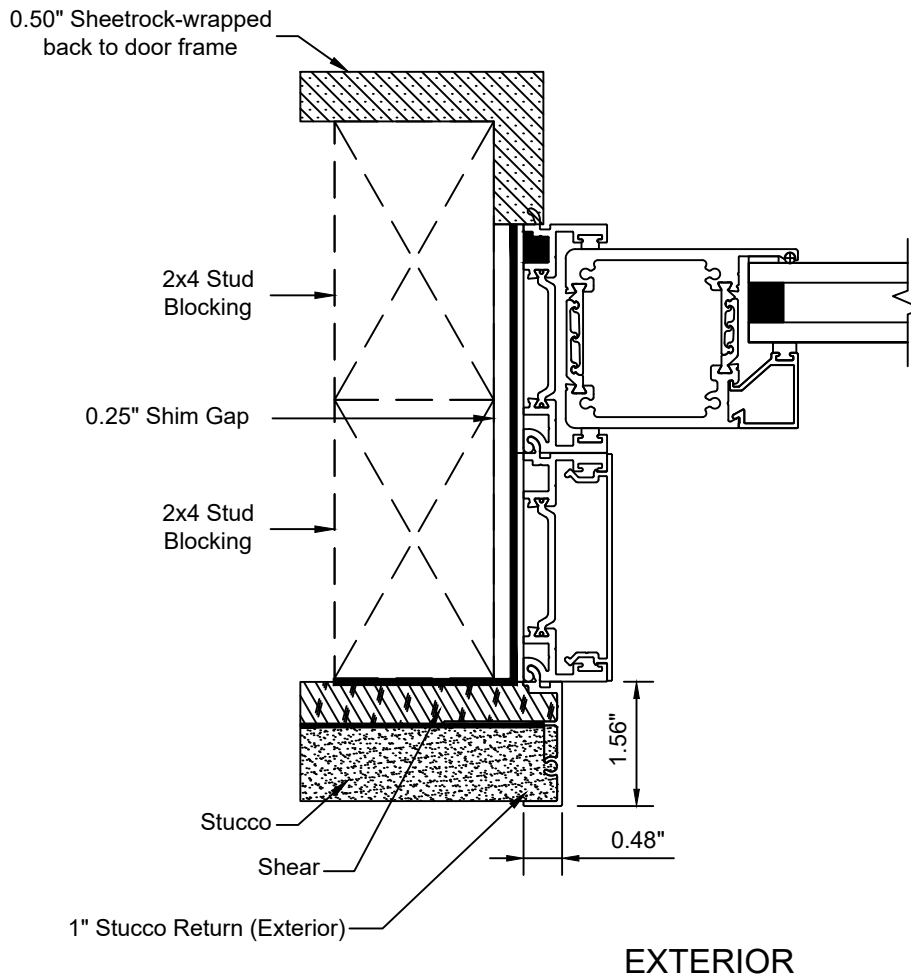


horizontal section of
2-panel pocket door or 2XP

PERFORMANCE SERIES 7600 MULTI-SLIDE DOOR



For more CAD
details scan here

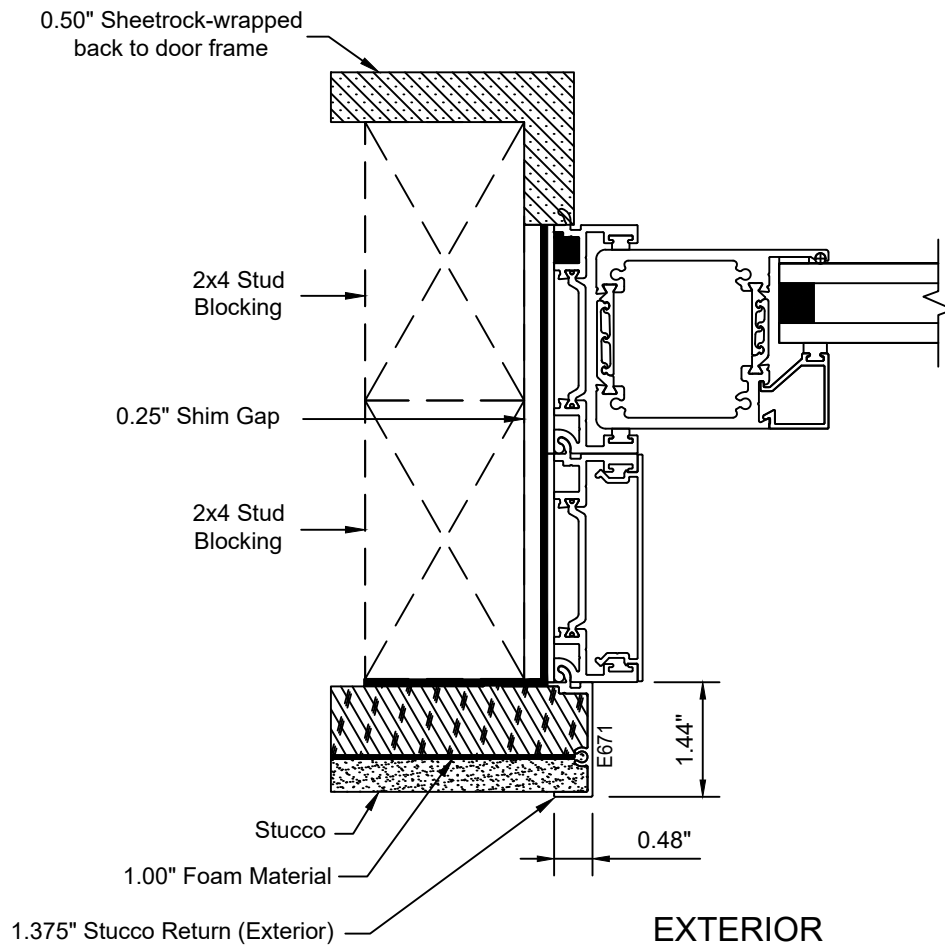


1" stucco return wall construction profile @ stud multi-slide door jamb application

PERFORMANCE SERIES 7600 MULTI-SLIDE DOOR



For more CAD
details scan here



1.375" stucco return wall construction profile @ stud multi-slide door jamb application