



Series 7630KD Assembly Instructions
Field Assembled Frames

Things to Know Before You Start

Removal of Old Fenestration Products

Ensure that any old fenestration products are removed and properly disposed. You may be able to recycle or donate removed glass and frames. For more information, check with your local recycling agency, the American Architectural Manufacturers Association, the U.S. Environmental Protection Agency, or the Building Materials Reuse Association to locate a nearby company or organization that accepts used windows and doors. To donate removed products, contact local nonprofits in need of building supplies, such as Habitat for Humanity.

Please note: Homes and condominiums built before 1978 may have lead-based paint, which can pose serious health hazards during removal. Information and instruction regarding proper management of lead-based paint is available at www.epa.gov/lead.

Installation Preparation

Field inspection frames are manufactured specific to each application. Prior to installation, it is important that you carefully review and understand the installation instructions and any drawings supplied. Western Window Systems' fenestration products should be installed only by experienced and qualified installation professionals. Failure to follow these instructions may result in poor performance including but not limited to operation, security, and weatherproofing failures and may void Western Window Systems' express limited warranties.

Verify that the window is the correct size and unit number, marked on the opening.

If you are bridging two or more installed mulled windows, refer to your specific product installation instructions

Product Handling and Storage

This is a finished product that must be protected before, during, and after installation to prevent damage to the glass, frame, finish, and hardware. Upon completion of window installation, the windows should be masked off and protected from any chemical exposure such as paint or mortar/stucco.

The window should be stored in a dry location that is protected from the elements. Wet packaging can cause damage to product finishes. If the packaging becomes wet, immediately replace it with dry packaging. To avoid damage, windows should be stored and transported on a flat, even surface and should not be dropped or dragged from the delivery truck.

Components

The components supplied will vary depending on the configuration you are installing. Before proceeding with the installation, inspect the components to become familiar with them and confirm that there is no damage that will affect the appearance or performance of the installed product. Damaged or missing parts should be reported to your supplier immediately.

Other Tools and Materials Necessary for Installation

1. Flashing membrane
2. Cordless driver with #2 Phillips-head tip
3. Dow Corning 1199 sealant
4. Wax

Things to Know Before You Start

5. 1/8" setting blocks for glazing
6. Levels of various size or a laser level
7. Pry bar
8. Dead-blow rubber mallet
9. Glazing roller for vinyl
10. Shims. Except in circumstances where a particular shim type is specified by applicable building codes, either wedge shims or horseshoe shims may be used. Shimming must be even across the window unit. Each shim must be long enough to cover the full width of the window frame from front to back.

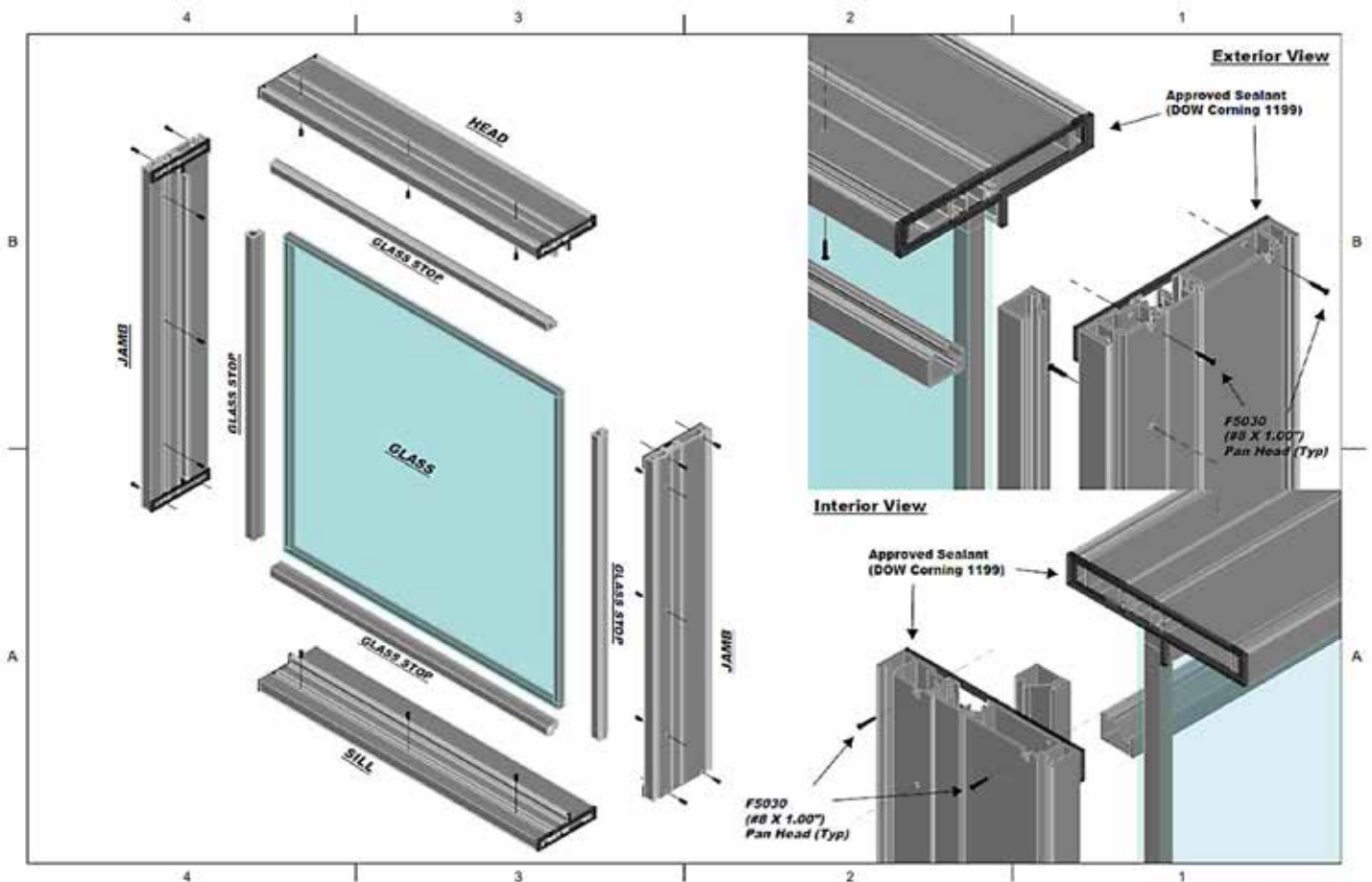
Weatherproofing

Rough openings must be waterproofed in accordance with AAMA Installation Masters standards and flashing and sealant manufacturer instructions, and they must meet all local building codes. Please refer to the videos provided online at: <https://www.westernwindowssystems.com/professionals/dealer/>

Frame Installation

1. **Frame Components:** Each window will have a head assembly, a sill, and a left and right jamb assembly (See Fig. 1).

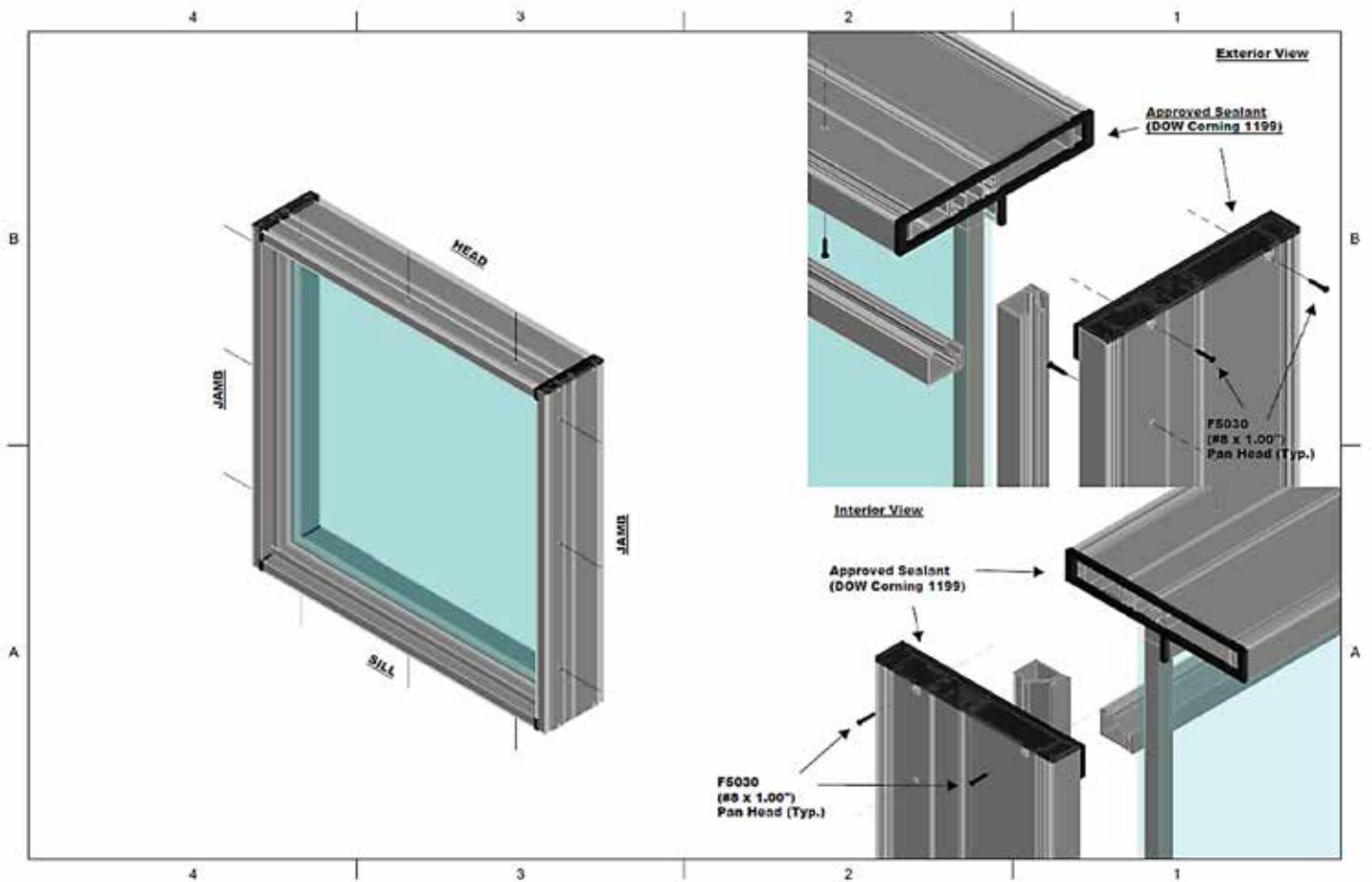
Fig. 1



Frame Installation

2. Refer to the CADD drawings supplied or order acknowledgement and lay out your parts on a table.
3. Butter both pieces where the frames will meet.
4. Fit pieces together and fasten using supplied #8 x 1" screws.
5. Clean off all excess silicone with denatured alcohol.
6. Repeat this process for all four corners.
7. Seal the outside of the frame joint fully per diagram. Tool (push) sealant into all seams.
8. Seal the inside of the frame joint per diagram. Tool (push) sealant into all seams.

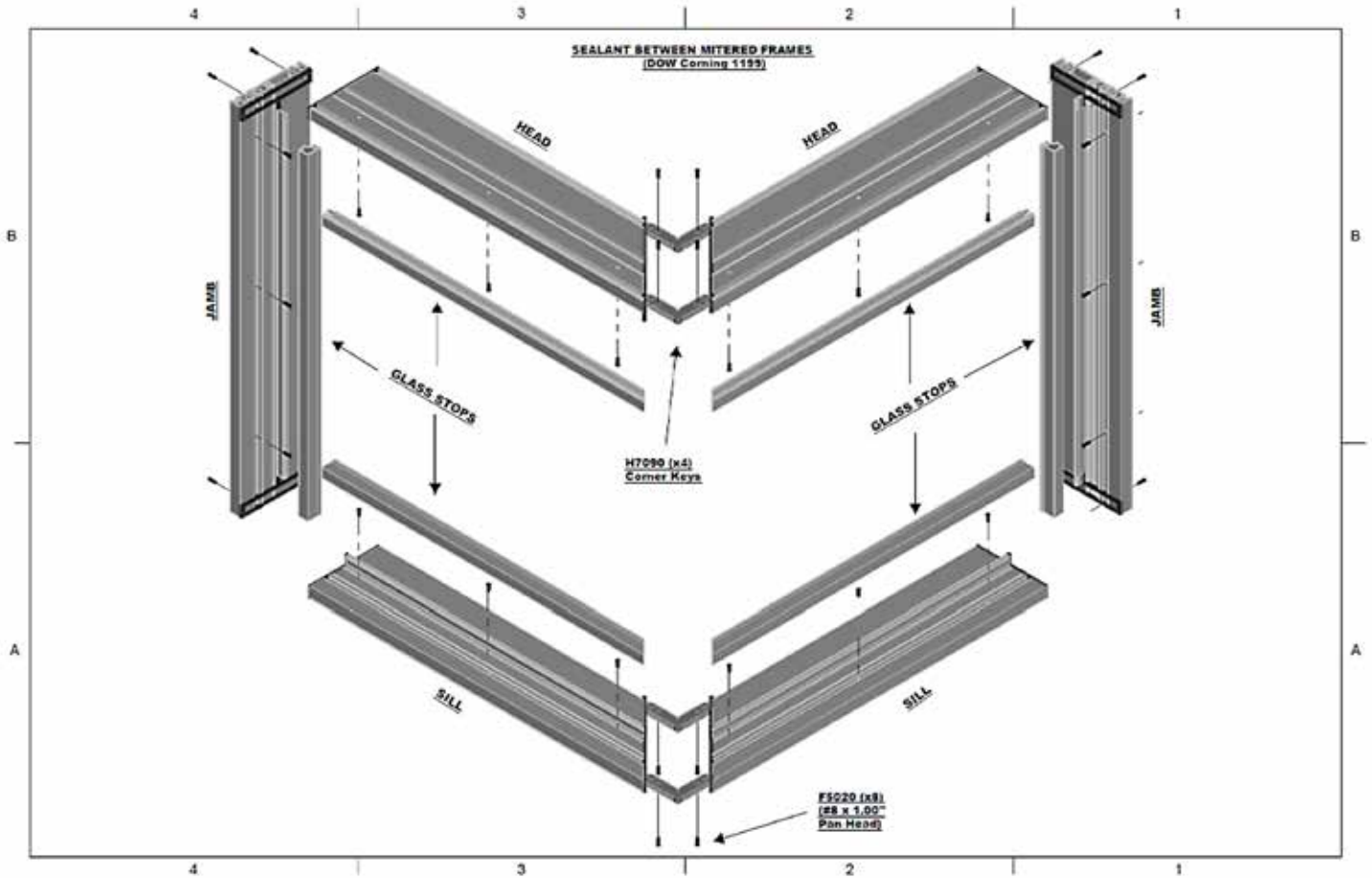
Fig. 2



Additional Step for Nail Fin Frames

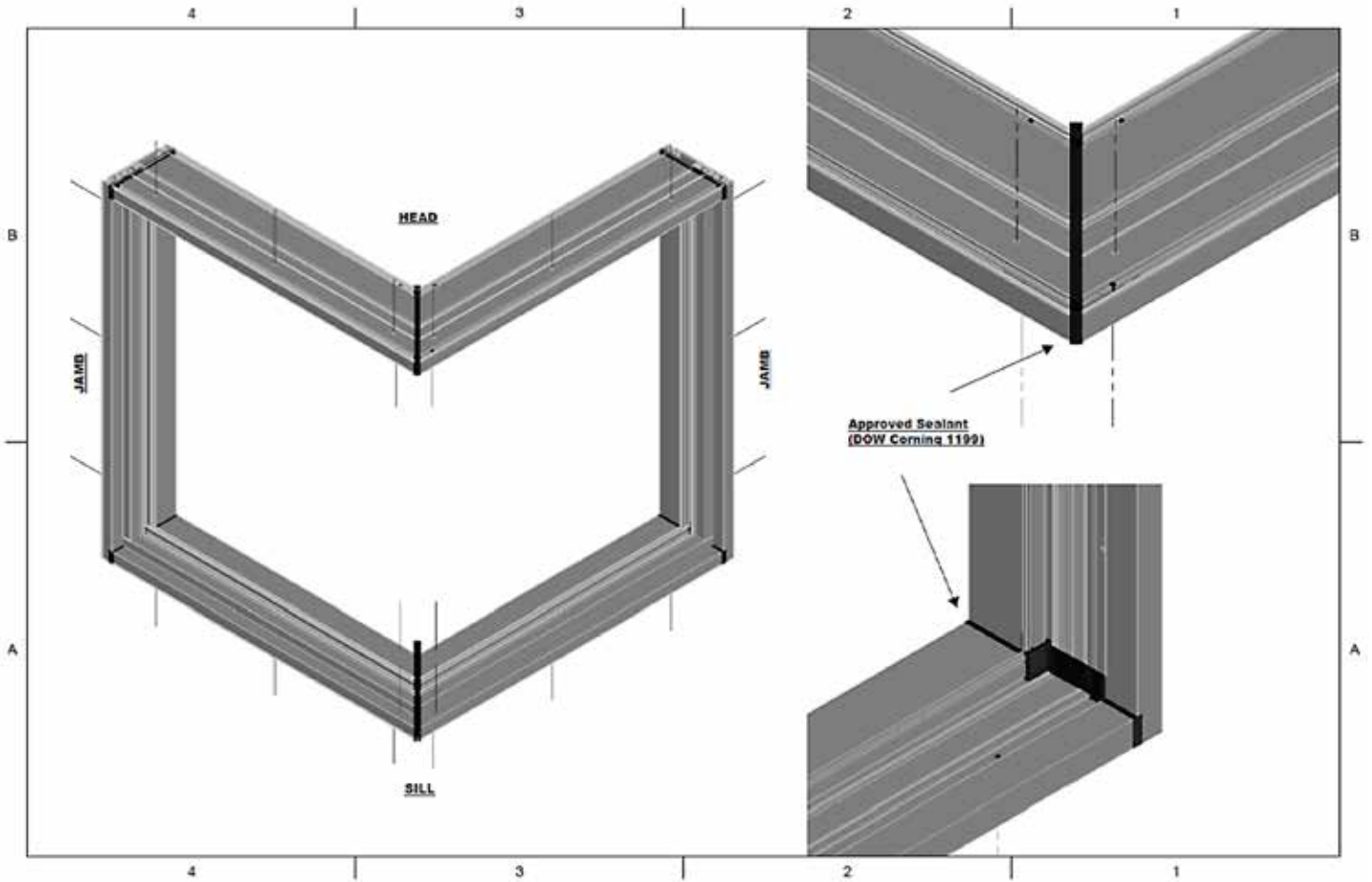
1. Apply the supplied corner key.
2. Seal the entire joint where the corner key meets the frame on the exterior side.

Fig. 3



Additional Step for Nail Fin Frames

Fig. 4





westernwindowssystem.com | 877-268-1300
2200 E. Riverview Dr., Phoenix, AZ 85034